

For Research Use Only

# LAPTM4B Polyclonal antibody

Catalog Number: 18895-1-AP

Featured Product

6 Publications



## Basic Information

**Catalog Number:**

18895-1-AP

**Size:**

450 µg/ml

**Source:**

Rabbit

**Isotype:**

IgG

**Immunogen Catalog Number:**

AG13521

**GenBank Accession Number:**

BC014129

**GeneID (NCBI):**

55353

**UNIPROT ID:**

Q86VI4

**Full Name:**

lysosomal protein transmembrane 4  
beta

**Calculated MW:**

41 kDa

**Observed MW:**

24 kDa

**Purification Method:**

Antigen affinity purification

**Recommended Dilutions:**

WB 1:500-1:2000

IHC 1:20-1:200

## Applications

**Tested Applications:**

IHC, WB, ELISA

**Cited Applications:**

WB, IF, IHC

**Species Specificity:**

human, mouse, rat

**Cited Species:**

human

**Positive Controls:**

WB: mouse lymph tissue, rat lymph tissue

IHC: human liver cancer tissue, human heart tissue

**Note-IHC: suggested antigen retrieval with TE buffer pH 9.0; (\*) Alternatively, antigen retrieval may be performed with citrate buffer pH 6.0**

## Background Information

LAPTM4B, a novel oncoprotein, is associated with the prognosis of cancer, and may play important roles in the initiation, promotion and metastasis of tumors. It was initially identified as a hepatocellular carcinoma-associated gene, and was recently shown to be up-regulated in various human cancers. Some studies indicated that LAPTM4B may be a useful marker of prognosis in ovarian carcinoma and endometrial cancer. LAPTM4B belongs to the LAPTM4/LAPTM5 transporter family. It has 3 isoforms with molecular masses 41 kDa, 35 kDa and 24 kDa. This antibody can recognize all the 3 isoforms of LAPTM4B.

## Notable Publications

Author	Pubmed ID	Journal	Application
XiaoJun Tan	27621469	Proc Natl Acad Sci U S A	IF
Ruth Milkereit	25998567	Nat Commun	WB
Shengfei Zhou	31084933	Biochem Biophys Res Commun	WB,IHC,IF

## Storage

**Storage:**

Store at -20°C. Stable for one year after shipment.

**Storage Buffer:**

PBS with 0.02% sodium azide and 50% glycerol pH 7.3.

Aliquoting is unnecessary for -20°C storage

For technical support and original validation data for this product please contact:

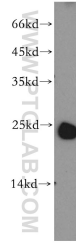
T: 4006900926

E: Proteintech-CN@ptglab.com

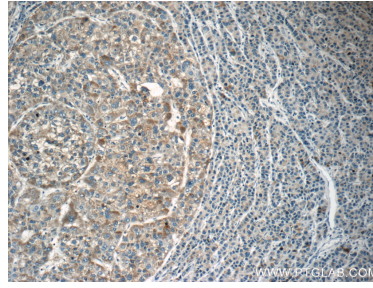
W: ptgcn.com

**This product is exclusively available under Proteintech Group brand and is not available to purchase from any other manufacturer.**

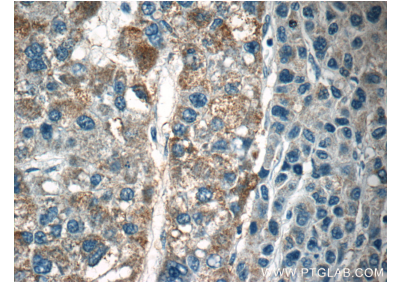
## Selected Validation Data



mouse lymph tissue were subjected to SDS PAGE followed by western blot with 18895-1-AP (LAPTM4B antibody) at dilution of 1:800 incubated at room temperature for 1.5 hours.



Immunohistochemical analysis of paraffin-embedded human liver cancer tissue slide using 18895-1-AP (LAPTM4B Antibody) at dilution of 1:50 (under 10x lens).



Immunohistochemical analysis of paraffin-embedded human liver cancer tissue slide using 18895-1-AP (LAPTM4B Antibody) at dilution of 1:50 (under 40x lens).