

For Research Use Only

SLC9A3R2 Polyclonal antibody, PBS Only

Catalog Number: 18891-1-PBS



Basic Information

Catalog Number:

18891-1-PBS

Source:

Rabbit

Isotype:

IgG

Immunogen Catalog Number:

AG13476

GenBank Accession Number:

BC106001

GeneID (NCBI):

9351

UNIPROT ID:

Q15599

Full Name:

solute carrier family 9
(sodium/hydrogen exchanger),
member 3 regulator 2

Calculated MW:

337 aa, 37 kDa

Observed MW:

45 kDa

Purification Method:

Antigen affinity purification

Applications

Tested Applications:

WB, Indirect ELISA

Species Specificity:

human, mouse, rat

Background Information

SLC9A3R2, also named as NHERF2, is a member of the Na⁺/H⁺ exchanger regulatory factor (NHERF) family of PDZ scaffolding proteins. SLC9A3R2 is needed for cGMP and carbachol-mediated inhibition as well as LPA and dexamethasone-mediated stimulation of NHE3. NHERF1 and NHERF2 are highly homologous structurally to each other but play different roles in the regulation of Na⁺ and Cl⁻ transport. (PMID: 23612977)

Storage

Storage:

Store at -80°C.

The product is shipped with ice packs. Upon receipt, store it immediately at -80°C

Storage Buffer:

PBS only, pH7.3

For technical support and original validation data for this product please contact:

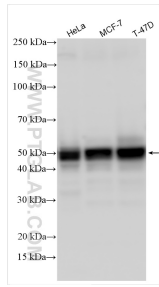
T: 4006900926

E: Proteintech-CN@ptglab.com

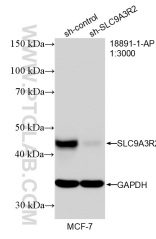
W: ptgcn.com

This product is exclusively available under Proteintech Group brand and is not available to purchase from any other manufacturer.

Selected Validation Data



Various lysates were subjected to SDS PAGE followed by western blot with 18891-1-AP (SLC9A3R2 antibody) at dilution of 1:1000 incubated at room temperature for 1.5 hours. This data was developed using the same antibody clone with 18891-1-PBS in a different storage buffer formulation.



WB result of SLC9A3R2 antibody (18891-1-AP; 1:3000; incubated at room temperature for 1.5 hours) with sh-Control and sh-SLC9A3R2 transfected MCF-7 cells. This data was developed using the same antibody clone with 18891-1-PBS in a different storage buffer formulation.