

For Research Use Only

CER1 Polyclonal antibody

Catalog Number: 18879-1-AP



Basic Information

Catalog Number:

18879-1-AP

Size:

270 µg/ml

Source:

Rabbit

Isotype:

IgG

Immunogen Catalog Number:

AG12926

GenBank Accession Number:

BC069405

GeneID (NCBI):

9350

UNIPROT ID:

O95813

Full Name:

cerberus 1, cysteine knot superfamily, homolog (Xenopus laevis)

Calculated MW:

267 aa, 30 kDa

Observed MW:

70 kDa

Purification Method:

Antigen affinity purification

Recommended Dilutions:

WB 1:1000-1:4000

IF-P 1:50-1:500

Applications

Tested Applications:

WB, IF-P, ELISA

Species Specificity:

human, mouse, rat

Positive Controls:

WB: U-251 cells, mouse kidney tissue, rat kidney tissue

IF-P: mouse kidney tissue,

Background Information

CER1 is a cytokine member of the cysteine knot superfamily, characterized by nine conserved cysteines and a cysteine knot region. The cerberus-related cytokines, together with Dan and DRM/Gremlin, represent a group of bone morphogenetic protein (BMP) antagonists that can bind directly to BMPs and inhibit their activity. CER1 can exist as homo- or heterodimers (PMID: 23717584, 9501024).

Storage

Storage:

Store at -20°C. Stable for one year after shipment.

Storage Buffer:

PBS with 0.02% sodium azide and 50% glycerol pH 7.3.

Aliquoting is unnecessary for -20°C storage

For technical support and original validation data for this product please contact:

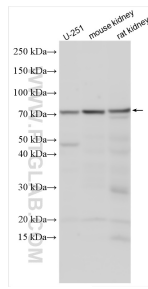
T: 4006900926

E: Proteintech-CN@ptglab.com

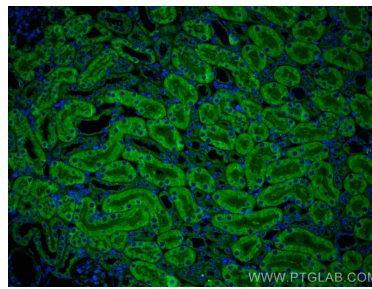
W: ptgcn.com

This product is exclusively available under Proteintech Group brand and is not available to purchase from any other manufacturer.

Selected Validation Data



Various lysates were subjected to SDS PAGE followed by western blot with 18879-1-AP (CER1 antibody) at dilution of 1:2000 incubated at room temperature for 1.5 hours.



Immunofluorescent analysis of (4% PFA) fixed mouse kidney tissue using CER1 antibody (18879-1-AP) at dilution of 1:200 and CoraLite® 488-Conjugated AffiniPure Goat Anti-Rabbit IgG(H+L).