

For Research Use Only

CD36 Polyclonal antibody, PBS Only

Catalog Number: 18836-1-PBS

Featured Product



Basic Information

Catalog Number:

18836-1-PBS

Concentration:

1 mg/ml

Source:

Rabbit

Isotype:

IgG

GenBank Accession Number:

BC008406

GeneID (NCBI):

948

UNIPROT ID:

P16671

Full Name:

CD36 molecule (thrombospondin receptor)

Calculated MW:

472 aa, 53 kDa

Observed MW:

88 kDa

Purification Method:

Antigen affinity purification

Applications

Tested Applications:

WB, IHC, ELISA

Species Specificity:

human

Background Information

CD36, also named as GP3B and GP4, is an 88-kDa membrane glycoprotein present on platelets, monocytes, erythroid precursors, endothelial cells, and several tumor cell lines. CD36 binds to collagen, thrombospondin, anionic phospholipids, long chain fatty acids and may function in the transport and/or as a regulator of fatty acid transport and oxidized LDL. CD36 may function as a cell adhesion molecule. It mediates cytoadherence of Plasmodium falciparum parasitized erythrocytes. Mutation of CD36 will cause platelet glycoprotein IV deficiency which known as CD36 deficiency. Genetic variations in CD36 are associated with susceptibility to coronary heart disease type 7 (CHDS7).

Storage

Storage:

Store at -80°C.

The product is shipped with ice packs. Upon receipt, store it immediately at -80°C

Storage Buffer:

PBS only, pH7.3

For technical support and original validation data for this product please contact:

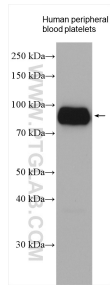
T: 4006900926

E: Proteintech-CN@ptglab.com

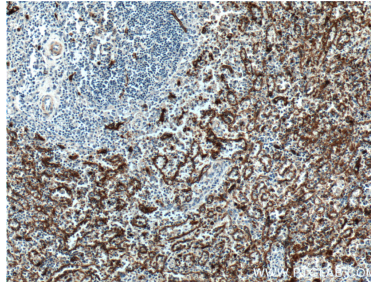
W: ptgcn.com

This product is exclusively available under Proteintech Group brand and is not available to purchase from any other manufacturer.

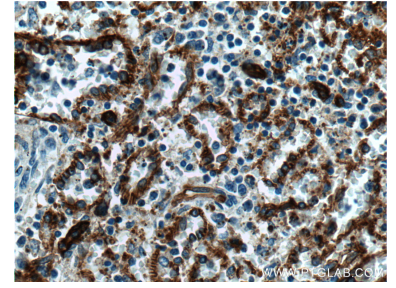
Selected Validation Data



Human peripheral blood platelets were subjected to SDS PAGE followed by western blot with 18836-1-AP (CD36 antibody) at dilution of 1:1000 incubated at room temperature for 1.5 hours. This data was developed using the same antibody clone with 18836-1-PBS in a different storage buffer formulation.



Immunohistochemical analysis of paraffin-embedded human spleen tissue slide using 18836-1-AP (CD36 antibody) at dilution of 1:800 (under 10x lens). This data was developed using the same antibody clone with 18836-1-PBS in a different storage buffer formulation.



Immunohistochemical analysis of paraffin-embedded human spleen tissue slide using 18836-1-AP (CD36 antibody) at dilution of 1:800 (under 40x lens). This data was developed using the same antibody clone with 18836-1-PBS in a different storage buffer formulation.