

For Research Use Only

# GPR68 Polyclonal antibody, PBS Only

Catalog Number: 18826-1-PBS



## Basic Information

Catalog Number:

18826-1-PBS

Size:

1 mg/ml

Source:

Rabbit

Isotype:

IgG

GenBank Accession Number:

BC098567

GeneID (NCBI):

8111

UNIPROT ID:

Q15743

Full Name:

G protein-coupled receptor 68

Calculated MW:

41 kDa

Observed MW:

50 kDa

Purification Method:

Antigen affinity purification

## Applications

Tested Applications:

WB, Indirect ELISA

Species Specificity:

human, mouse, rat

## Background Information

GPR68, also named as OGR1, belongs to the G-protein coupled receptor 1 family. GPR68 binds sphingosylphosphorylcholine, GPR68 is a lipid molecule involved in cell growth and survival and has been shown to act as a proton-sensing receptor stimulating inositol phosphate formation.

## Storage

Storage:

Store at -80°C.

**The product is shipped with ice packs. Upon receipt, store it immediately at -80°C**

Storage Buffer:

PBS Only

For technical support and original validation data for this product please contact:

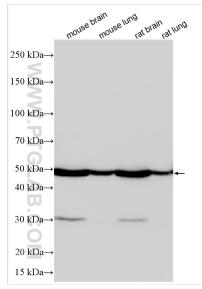
T: 4006900926

E: Proteintech-CN@ptglab.com

W: ptgcn.com

**This product is exclusively available under Proteintech Group brand and is not available to purchase from any other manufacturer.**

## Selected Validation Data



Various lysates were subjected to SDS PAGE followed by western blot with 18826-1-AP (GPR68 antibody) at dilution of 1:3000 incubated at room temperature for 1.5 hours. This data was developed using the same antibody clone with 18826-1-PBS in a different storage buffer formulation.