

For Research Use Only

RBP2 Polyclonal antibody, PBS Only

Catalog Number: 18825-1-PBS

Featured Product



Basic Information

Catalog Number:

18825-1-PBS

Concentration:

1 mg/ml

Source:

Rabbit

Isotype:

IgG

GenBank Accession Number:

NM_005056

GeneID (NCBI):

5927

UNIPROT ID:

P29375

Full Name:

lysine (K)-specific demethylase 5A

Calculated MW:

192 kDa

Observed MW:

192 kDa

Purification Method:

Antigen affinity purification

Applications

Tested Applications:

WB, IF/ICC, IF-P, IP, Indirect ELISA

Species Specificity:

human, mouse, rat

Background Information

KDM5A, also named as JARID1A, RBBP2 and RBP2, belongs to the JARID1 histone demethylase family. KDM5A is a Histone demethylase that specifically demethylates 'Lys-4' of histone H3, thereby playing a central role in histone code. Does not demethylate histone H3 'Lys-9', H3 'Lys-27', H3 'Lys-36', H3 'Lys-79' or H4 'Lys-20'. RBP2 may stimulate transcription mediated by nuclear receptors. It may be involved in transcriptional regulation of Hox proteins during cell differentiation. It may participate in transcriptional repression of cytokines such as CXCL12.

Storage

Storage:

Store at -80°C.

The product is shipped with ice packs. Upon receipt, store it immediately at -80°C

Storage Buffer:

PBS only

For technical support and original validation data for this product please contact:

T: 4006900926

E: Proteintech-CN@ptglab.com

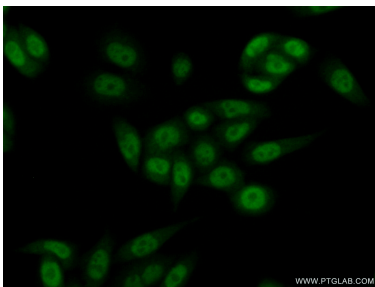
W: ptgcn.com

This product is exclusively available under Proteintech Group brand and is not available to purchase from any other manufacturer.

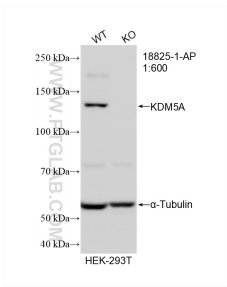
Selected Validation Data



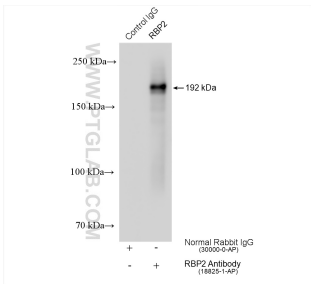
HeLa cells were subjected to SDS PAGE followed by western blot with 18825-1-AP (RBP2 antibody) at dilution of 1:500 incubated at room temperature for 1.5 hours. This data was developed using the same antibody clone with 18825-1-PBS in a different storage buffer formulation.



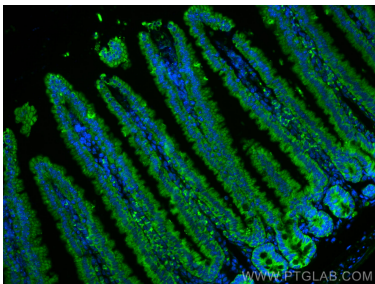
Immunofluorescent analysis of (10% Formaldehyde) fixed HeLa cells using 18825-1-AP (RBP2 antibody) at dilution of 1:50 and Alexa Fluor 488-conjugated AffiniPure Goat Anti-Rabbit IgG(H+L). This data was developed using the same antibody clone with 18825-1-PBS in a different storage buffer formulation.



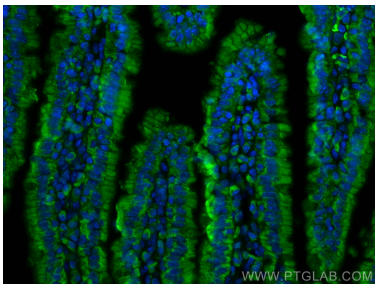
WB result of KDM5A antibody (18825-1-AP; 1:600; room temperature for 1.5 hours) with wild-type and KDM5A knockout HEK-293T cells. This data was developed using the same antibody clone with 18825-1-PBS in a different storage buffer formulation.



IP result of anti-RBP2 (IP:18825-1-AP, 4ug; Detection:18825-1-AP 1:500) with HeLa cells lysate 1280 ug. This data was developed using the same antibody clone with 18825-1-PBS in a different storage buffer formulation.



Immunofluorescent analysis of (4% PFA) fixed paraffin-embedded mouse small intestine tissue using RBP2 antibody (18825-1-AP) at dilution of 1:200 and CoraLite®488-Conjugated AffiniPure Goat Anti-Rabbit IgG(H+L) (SA00013-2). Heat mediated antigen retrieval with Tris-EDTA buffer (pH 9.0). This data was developed using the same antibody clone with 18825-1-PBS in a different storage buffer formulation.



Immunofluorescent analysis of (4% PFA) fixed paraffin-embedded mouse small intestine tissue using RBP2 antibody (18825-1-AP) at dilution of 1:200 and CoraLite®488-Conjugated AffiniPure Goat Anti-Rabbit IgG(H+L) (SA00013-2). Heat mediated antigen retrieval with Tris-EDTA buffer (pH 9.0). This data was developed using the same antibody clone with 18825-1-PBS in a different storage buffer formulation.