

For Research Use Only

MLN Polyclonal antibody, PBS Only

Catalog Number: 18824-1-PBS



Basic Information

Catalog Number:

18824-1-PBS

Concentration:

1 mg/ml

Source:

Rabbit

Isotype:

IgG

GenBank Accession Number:

BC112314

GeneID (NCBI):

4295

UNIPROT ID:

P12872

Full Name:

motilin

Calculated MW:

13 kDa

Observed MW:

13 kDa

Purification Method:

Antigen affinity purification

Applications

Tested Applications:

WB, Indirect ELISA

Species Specificity:

human

Background Information

MLN, also named as MAP, belongs to the motilin family. MLN plays an important role in the regulation of interdigestive gastrointestinal motility and indirectly causes rhythmic contraction of duodenal and colonic smooth muscle.

Storage

Storage:

Store at -80°C.

The product is shipped with ice packs. Upon receipt, store it immediately at -80°C

Storage Buffer:

PBS Only

For technical support and original validation data for this product please contact:

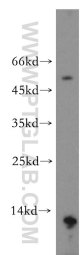
T: 4006900926

E: Proteintech-CN@ptglab.com

W: ptgcn.com

This product is exclusively available under Proteintech Group brand and is not available to purchase from any other manufacturer.

Selected Validation Data



human stomach tissue were subjected to SDS PAGE followed by western blot with 18824-1-AP (MLN antibody) at dilution of 1:4000 incubated at room temperature for 1.5 hours. This data was developed using the same antibody clone with 18824-1-PBS in a different storage buffer formulation.