

For Research Use Only

# GPR142 Polyclonal antibody

Catalog Number: 18820-1-AP **1 Publications**



## Basic Information

**Catalog Number:**

18820-1-AP

**Size:**

207 µg/ml

**Source:**

Rabbit

**Isotype:**

IgG

**GenBank Accession Number:**

BC152987

**GeneID (NCBI):**

350383

**UNIPROT ID:**

Q7Z601

**Full Name:**

G protein-coupled receptor 142

**Calculated MW:**

462 aa, 51 kDa

**Observed MW:**

51-55 kDa

**Purification Method:**

Antigen affinity purification

**Recommended Dilutions:**

WB 1:500-1:1000

## Applications

**Tested Applications:**

FC, WB, ELISA

**Cited Applications:**

WB

**Species Specificity:**

human

**Positive Controls:**

WB : SH-SY5Y cells,

## Background Information

GPR142, also named as PGR2, belongs to the G-protein coupled receptor 1 family. It is an orphan receptor. This antibody recognizes the 51-kDa GRP142.

## Notable Publications

Author	Pubmed ID	Journal	Application
Bingru Zhao	35255833	BMC Genomics	WB

## Storage

**Storage:**

Store at -20°C. Stable for one year after shipment.

**Storage Buffer:**

PBS with 0.02% sodium azide and 50% glycerol pH 7.3.

Aliquoting is unnecessary for -20°C storage

For technical support and original validation data for this product please contact:

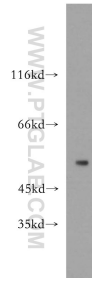
T: 4006900926

E: [Proteintech-CN@ptglab.com](mailto:Proteintech-CN@ptglab.com)

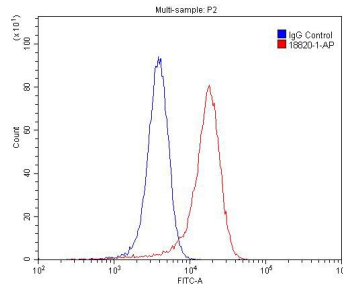
W: [ptgcn.com](http://ptgcn.com)

**This product is exclusively available under Proteintech Group brand and is not available to purchase from any other manufacturer.**

## Selected Validation Data



SH-SY5Y cells were subjected to SDS PAGE followed by western blot with 18820-1-AP (GPR142 antibody) at dilution of 1:300 incubated at room temperature for 1.5 hours.



1X10<sup>6</sup> SH-SY5Y cells were stained with 0.2ug GPR142 antibody (18820-1-AP, red) and control antibody (blue). Fixed with 4% PFA blocked with 3% BSA (30 min). Alexa Fluor 488-conjugated AffiniPure Goat Anti-Rabbit IgG(H+L) with dilution 1:1500.