

For Research Use Only

CAMSAP1 Polyclonal antibody, PBS Only

Catalog Number: 18816-1-PBS



Basic Information

Catalog Number:

18816-1-PBS

Size:

1 mg/ml

Source:

Rabbit

Isotype:

IgG

GenBank Accession Number:

BC144082

GeneID (NCBI):

157922

UNIPROT ID:

Q5T5Y3

Full Name:

calmodulin regulated spectrin-associated protein 1

Calculated MW:

179 kDa

Observed MW:

245 kDa

Purification Method:

Antigen affinity purification

Applications

Tested Applications:

WB, Indirect ELISA

Species Specificity:

human, mouse

Background Information

CAMSAP1, or Calmodulin-regulated spectrin-associated protein 1, is a protein that plays a crucial role in the formation and maintenance of the minus end of non-centrosomal microtubules, which are essential for proper neuronal function and development. Research has shown that CAMSAP1 is vital for neuronal polarization, migration, and cortical lamination. CAMSAP1 has also been implicated in cancer prognosis. A study found that CAMSAP1 mutation can activate anti-tumor immunity, mediate tumor cell apoptosis, inhibit epithelial-mesenchymal transition (EMT), improve prognosis, and improve platinum drug sensitivity in small-cell lung cancer patients treated with platinum-based chemotherapy, suggesting that CAMSAP1 mutation may be a potential biomarker indicating platinum drug sensitivity and patient prognosis. The CAMSAP1 of the calculated MW is around 170 kDa, and the observed MW is 245 kDa (PMID: 32839317).

Storage

Storage:

Store at -80°C.

The product is shipped with ice packs. Upon receipt, store it immediately at -80°C

Storage Buffer:

PBS Only

For technical support and original validation data for this product please contact:

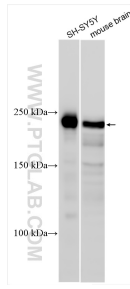
T: 4006900926

E: Proteintech-CN@ptglab.com

W: ptgcn.com

This product is exclusively available under Proteintech Group brand and is not available to purchase from any other manufacturer.

Selected Validation Data



Various lysates were subjected to SDS PAGE followed by western blot with 18816-1-AP (CAMSAP1 antibody) at dilution of 1:1000 incubated at room temperature for 1.5 hours. This data was developed using the same antibody clone with 18816-1-PBS in a different storage buffer formulation.