

For Research Use Only

MEPE Polyclonal antibody

Catalog Number: 18804-1-AP

Featured Product



Basic Information

Catalog Number:

18804-1-AP

Size:

700 µg/ml

Source:

Rabbit

Isotype:

IgG

GenBank Accession Number:

BC128158

GeneID (NCBI):

56955

UNIPROT ID:

Q9NQ76

Full Name:

matrix extracellular
phosphoglycoprotein

Calculated MW:

525 aa, 58 kDa

Observed MW:

43 kDa, 98 kDa

Purification Method:

Antigen affinity purification

Recommended Dilutions:

WB 1:1000-1:4000

Applications

Tested Applications:

WB, ELISA

Species Specificity:

human

Positive Controls:

WB : HepG2 cells, A2780 cells, A375 cells, HeLa cells,
MCF-7 cells

Background Information

Matrix extracellular phosphoglycoprotein (MEPE), also known as osteoblast/osteocyte factor 45 (OF45), is a member of the small integrin-binding ligand N-linked glycoprotein (SIBLING) family (PMID: 12952171). MEPE promotes renal phosphate excretion and modulates mineralization (PMID: 22582013). It can be phosphorylated by secreted protein kinases (PMID: 14962809). MEPE is expressed in osteoblasts, osteocytes and odontoblasts, and the expression has also been reported in numerous human tumor cell lines (PMID: 14962809; 20145617). It is a 525-amino acid protein with a calculated molecular weight of 58 kDa. This antibody raised against a synthetic peptide (CTHGRKYHYVPHRQNNSTR) detects a major band (43 kDa) and two minor bands (98 kDa and 34 kDa).

Storage

Storage:

Store at -20°C. Stable for one year after shipment.

Storage Buffer:

PBS with 0.02% sodium azide and 50% glycerol pH 7.3.

Aliquoting is unnecessary for -20°C storage

For technical support and original validation data for this product please contact:

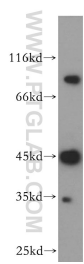
T: 4006900926

E: Proteintech-CN@ptglab.com

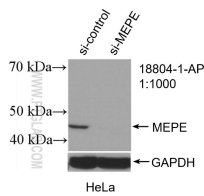
W: ptgcn.com

This product is exclusively available under Proteintech Group brand and is not available to purchase from any other manufacturer.

Selected Validation Data



HepG2 cells were subjected to SDS PAGE followed by western blot with 18804-1-AP (MEPE antibody) at dilution of 1:600 incubated at room temperature for 1.5 hours.



WB result of MEPE antibody (18804-1-AP; 1:1000; incubated at room temperature for 1.5 hours) with sh-Control and sh-MEPE transfected HeLa cells.