

For Research Use Only

# INTS8 Polyclonal antibody

Catalog Number: 18802-1-AP **4 Publications**



## Basic Information

**Catalog Number:**

18802-1-AP

**Size:**

400 µg/ml

**Source:**

Rabbit

**Isotype:**

IgG

**GenBank Accession Number:**

BC136754

**GeneID (NCBI):**

55656

**UNIPROT ID:**

Q75QN2

**Full Name:**

integrator complex subunit 8

**Calculated MW:**

111 kDa

**Observed MW:**

90-115 kDa

**Purification Method:**

Antigen affinity purification

**Recommended Dilutions:**

WB 1:200-1:1000

IP 0.5-4.0 µg for 1.0-3.0 mg of total protein lysate

IF 1:10-1:100

## Applications

**Tested Applications:**

IF/ICC, IP, WB, ELISA

**Cited Applications:**

WB, IHC

**Species Specificity:**

human

**Cited Species:**

human, mouse

**Positive Controls:**

WB : MCF7 cells, HeLa cells

IP : HeLa cells,

IF : HeLa cells,

## Background Information

INTS8, also named as C8orf52, is a Component of the Integrator complex which is a complex involved in the small nuclear RNAs (snRNA) U1 and U2 transcription and in their 3'-box-dependent processing. INTS8 is associated with the C-terminal domain (CTD) of RNA polymerase II largest subunit (POLR2A) and is recruited to the U1 and U2 snRNAs genes.

## Notable Publications

Author	Pubmed ID	Journal	Application
Hai Zheng	33243860	Science	WB
Hui Tong	30881114	Cancer Manag Res	IHC
Fuqiang Yin	27567667	J Exp Clin Cancer Res	WB

## Storage

**Storage:**

Store at -20°C. Stable for one year after shipment.

**Storage Buffer:**

PBS with 0.02% sodium azide and 50% glycerol pH 7.3.

Aliquoting is unnecessary for -20°C storage

For technical support and original validation data for this product please contact:

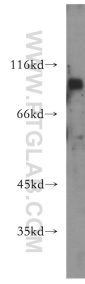
T: 4006900926

E: Proteintech-CN@ptglab.com

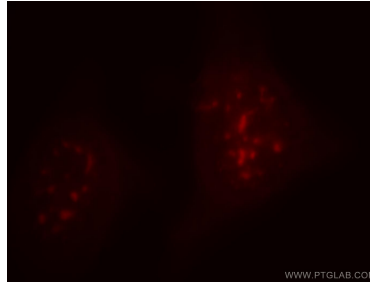
W: ptgcn.com

**This product is exclusively available under Proteintech Group brand and is not available to purchase from any other manufacturer.**

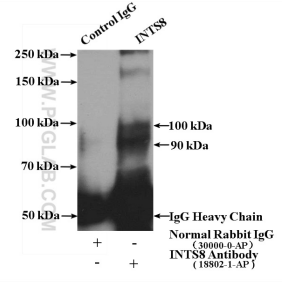
## Selected Validation Data



MCF7 cells were subjected to SDS PAGE followed by western blot with 18802-1-AP (INTS8 antibody) at dilution of 1:300 incubated at room temperature for 1.5 hours.



Immunofluorescent analysis of HeLa cells, using INTS8 antibody 18802-1-AP at 1:25 dilution and Rhodamine-labeled goat anti-rabbit IgG (red).



IP result of anti-INTS8 (IP:18802-1-AP, 4ug; Detection:18802-1-AP 1:500) with HeLa cells lysate 4000ug.