

# NIPBL Polyclonal antibody

Catalog Number: 18792-1-AP

4 Publications

## Basic Information

Catalog Number:

18792-1-AP

Size:

350 µg/ml

Source:

Rabbit

Isotype:

IgG

Immunogen Catalog Number:

AG5663

GenBank Accession Number:

BC033847

GeneID (NCBI):

25836

UNIPROT ID:

Q6KC79

Full Name:

Nipped-B homolog (Drosophila)

Calculated MW:

2804 aa, 316 kDa

Observed MW:

300 kDa

Purification Method:

Antigen affinity purification

Recommended Dilutions:

WB 1:500-1:2000

IF/ICC 1:50-1:500

## Applications

Tested Applications:

IF/ICC, WB, ELISA

Cited Applications:

WB, IP, ChIP

Species Specificity:

human, mouse, rat

Cited Species:

human, mouse

Positive Controls:

WB : HeLa cells,

IF/ICC : HeLa cells,

## Background Information

NIPBL, also named as Nipped-B-like protein, is a 28-4 amino acid protein, which Contains one Pro-Xaa-Val-Xaa-Leu (PxVxL) motif, which is required for interaction with chromoshadow domains and belongs to the SCC2/Nipped-B family. NIPBL probably plays a structural role in chromatin and Involve in sister chromatid cohesion, possibly by interacting with the cohesin complex. endogenous full length NIPBL which is estimated to be about 300kDa led us to believe that the NIPBL protein was deteriorated or lost by the standard protein extraction and blotting techniques.

## Notable Publications

Author	Pubmed ID	Journal	Application
Dan Liu	29712898	Nat Commun	WB
Santosh K Gothwal	38567724	Nucleic Acids Res	WB,IP
Yeguang Hu	37995656	Cell	ChIP

## Storage

Storage:

Store at -20°C. Stable for one year after shipment.

Storage Buffer:

PBS with 0.02% sodium azide and 50% glycerol pH 7.3.

Aliquoting is unnecessary for -20°C storage

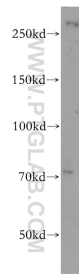
For technical support and original validation data for this product please contact:

T: 4006900926

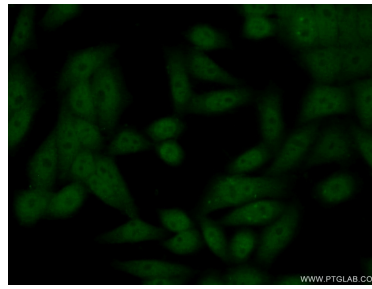
E: [Proteintech-CN@ptglab.com](mailto:Proteintech-CN@ptglab.com)W: [ptgcn.com](http://ptgcn.com)

This product is exclusively available under Proteintech Group brand and is not available to purchase from any other manufacturer.

## Selected Validation Data



HeLa cells were subjected to SDS PAGE followed by western blot with 18792-1-AP (NIPBL antibody) at dilution of 1:800 incubated at room temperature for 1.5 hours.



Immunofluorescent analysis of (10% Formaldehyde) fixed HeLa cells using 18792-1-AP (NIPBL antibody) at dilution of 1:50 and Alexa Fluor 488-conjugated AffiniPure Goat Anti-Rabbit IgG(H+L).