

For Research Use Only

TPPP Polyclonal antibody

Catalog Number: 18742-1-AP

5 Publications



Basic Information

Catalog Number:

18742-1-AP

Size:

500 ug/ml

Source:

Rabbit

Isotype:

IgG

GenBank Accession Number:

BC131506

GeneID (NCBI):

11076

UNIPROT ID:

O94811

Full Name:

tubulin polymerization promoting protein

Calculated MW:

219 aa, 24 kDa

Observed MW:

24-28 kDa

Purification Method:

Antigen affinity purification

Recommended Dilutions:

WB 1:500-1:3000

IHC 1:20-1:200

IF/ICC 1:200-1:800

Applications

Tested Applications:

WB, IHC, IF/ICC, ELISA

Cited Applications:

WB, IHC, IF

Species Specificity:

human, mouse

Cited Species:

human, mouse, rat

Note-IHC: suggested antigen retrieval with TE buffer pH 9.0; (*) Alternatively, antigen retrieval may be performed with citrate buffer pH 6.0

Positive Controls:

WB : mouse brain tissue, MCF-7 cells, mouse spleen tissue

IHC : human spleen tissue,

IF/ICC : Neuro-2a cells,

Background Information

TPPP, also named as TPPP1, P24 and P25, belongs to the TPPP family. TPPP promotes in vitro the polymerization of tubulin into double-walled tubules and polymorphic aggregates or bundled stabilized microtubules blocks. When overexpressed, TPPP inhibits mitotic spindle assembly and nuclear envelope breakdown, apparently without affecting other cellular events.

Notable Publications

Author	Pubmed ID	Journal	Application
Meng-Meng Fu	31522887	Cell	IF
Yi Chen	36308866	J Mol Cell Cardiol	WB
Yingfen Wu	33094864	FASEB J	WB,IHC,IF

Storage

Storage:

Store at -20°C. Stable for one year after shipment.

Storage Buffer:

PBS with 0.02% sodium azide and 50% glycerol pH 7.3.

Aliquoting is unnecessary for -20°C storage

For technical support and original validation data for this product please contact:

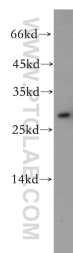
T: 4006900926

E: Proteintech-CN@ptglab.com

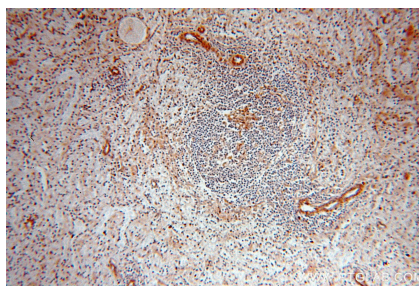
W: ptgcn.com

This product is exclusively available under Proteintech Group brand and is not available to purchase from any other manufacturer.

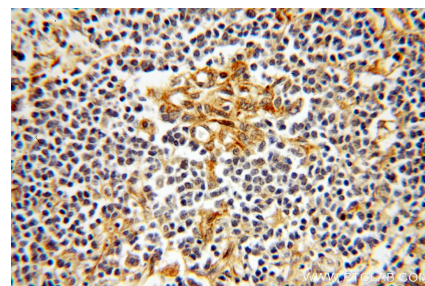
Selected Validation Data



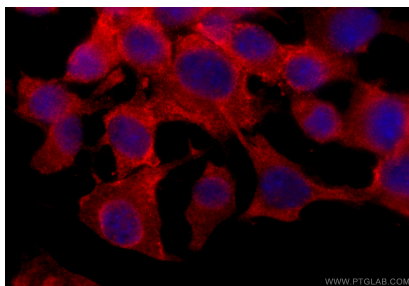
mouse brain tissue were subjected to SDS PAGE followed by western blot with 18742-1-AP (TPPP antibody) at dilution of 1:500 incubated at room temperature for 1.5 hours.



Immunohistochemical analysis of paraffin-embedded human spleen using 18742-1-AP (TPPP antibody) at dilution of 1:100 (under 10x lens).



Immunohistochemical analysis of paraffin-embedded human spleen using 18742-1-AP (TPPP antibody) at dilution of 1:100 (under 40x lens).



Immunofluorescent analysis of (-20°C Ethanol) fixed Neuro-2a cells using TPPP antibody (18742-1-AP) at dilution of 1:400 and CoraLite®594-Conjugated Goat Anti-Rabbit IgG(H+L) (SA00013-4).