

For Research Use Only

MEF2B (isoform 365aa)-Specific Polyclonal antibody



Catalog Number: 18710-1-AP

Basic Information

Catalog Number:

18710-1-AP

Size:

450 µg/ml

Source:

Rabbit

Isotype:

IgG

GenBank Accession Number:

NM_005919

GeneID (NCBI):

4207

UNIPROT ID:

Q02080

Full Name:

LOC729991-MEF2B readthrough transcript

Calculated MW:

39 kDa

Observed MW:

38 kDa

Purification Method:

Antigen affinity purification

Recommended Dilutions:

WB 1:500-1:1000

Applications

Tested Applications:

WB, ELISA

Species Specificity:

human, mouse

Positive Controls:

WB : mouse skeletal muscle tissue,

Background Information

MEF2B is a member of the myocyte enhancer factor family of transcription factors. MEF family is thought to be involved in differentiation of certain neurogenic cells. MEF2B may be involved in muscle-specific and/or growth factor-related transcription.

This antibody detects the short isoform 365aa of MEF2B only.

Storage

Storage:

Store at -20°C. Stable for one year after shipment.

Storage Buffer:

PBS with 0.02% sodium azide and 50% glycerol pH 7.3.

Aliquoting is unnecessary for -20°C storage

For technical support and original validation data for this product please contact:

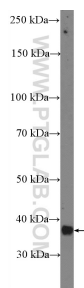
T: 4006900926

E: Proteintech-CN@ptglab.com

W: ptgcn.com

This product is exclusively available under Proteintech Group brand and is not available to purchase from any other manufacturer.

Selected Validation Data



mouse skeletal muscle tissue were subjected to SDS PAGE followed by western blot with 18710-1-AP (MEF2B-Specific Antibody) at dilution of 1:600 incubated at room temperature for 1.5 hours.