

For Research Use Only

# QPCT Polyclonal antibody, PBS Only

Catalog Number:18571-1-PBS



## Basic Information

<b>Catalog Number:</b> 18571-1-PBS	<b>GenBank Accession Number:</b> BC047756	<b>Purification Method:</b> Antigen affinity purification
<b>Concentration:</b> 1 mg/ml	<b>GeneID (NCBI):</b> 25797	
<b>Source:</b> Rabbit	<b>UNIPROT ID:</b> Q16769	
<b>Isotype:</b> IgG	<b>Full Name:</b> glutaminyl-peptide cyclotransferase	
<b>Immunogen Catalog Number:</b> AG13416	<b>Calculated MW:</b> 361 aa, 41 kDa	
	<b>Observed MW:</b> 41 kDa, 35 kDa	

## Applications

**Tested Applications:**  
WB, IF/ICC, Indirect ELISA

**Species Specificity:**  
human

## Background Information

Glutaminyl-peptide cyclotransferase (QPCT) gene encodes glutaminyl cyclase (QC), an enzyme that plays a role in post-translational modification of proteins by converting N-terminal glutamate to pyroglutamine. QPCT plays a specific role in promoting tumor cell proliferation, migration and angiogenesis as well as in inhibiting tumor cell apoptosis in cancers such as thyroid cancer and renal cell carcinoma (PMID: 38417050). Human QPCT has two isoforms produced by alternative splicing, 41 kDa and 35 kDa, respectively.

## Storage

**Storage:**  
Store at -80°C.  
**The product is shipped with ice packs. Upon receipt, store it immediately at -80°C**

**Storage Buffer:**  
PBS only, pH7.3

For technical support and original validation data for this product please contact:

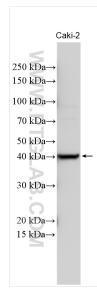
T: 4006900926

E: [Proteintech-CN@ptglab.com](mailto:Proteintech-CN@ptglab.com)

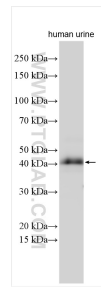
W: [ptgcn.com](http://ptgcn.com)

**This product is exclusively available under Proteintech Group brand and is not available to purchase from any other manufacturer.**

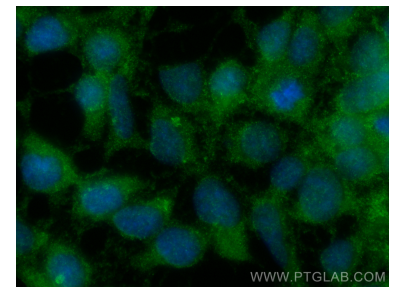
## Selected Validation Data



Various lysates were subjected to SDS PAGE followed by western blot with 18571-1-AP (QPCT antibody) at dilution of 1:1000 incubated at room temperature for 1.5 hours. This data was developed using the same antibody clone with 18571-1-PBS in a different storage buffer formulation.



Various lysates were subjected to SDS PAGE followed by western blot with 18571-1-AP (QPCT antibody) at dilution of 1:1000 incubated at room temperature for 1.5 hours. This data was developed using the same antibody clone with 18571-1-PBS in a different storage buffer formulation.



Immunofluorescent analysis of (-20°C Ethanol) fixed HEK-293 cells using QPCT antibody (18571-1-AP) at dilution of 1:200 and CoraLite®488-Conjugated Goat Anti-Rabbit IgG(H+L) (SA00013-2). This data was developed using the same antibody clone with 18571-1-PBS in a different storage buffer formulation.