

For Research Use Only

QPCT Polyclonal antibody

Catalog Number: 18571-1-AP



Basic Information

Catalog Number: 18571-1-AP	GenBank Accession Number: BC047756	Purification Method: Antigen affinity purification
Concentration: 550 ug/ml	GeneID (NCBI): 25797	Recommended Dilutions: WB 1:500-1:2000
Source: Rabbit	UNIPROT ID: Q16769	IF/ICC 1:50-1:500
Isotype: IgG	Full Name: glutaminyl-peptide cyclotransferase	
Immunogen Catalog Number: AG13416	Calculated MW: 361 aa, 41 kDa	
	Observed MW: 41 kDa, 35 kDa	

Applications

Tested Applications: WB, IF/ICC, ELISA	Positive Controls:
Species Specificity: human	WB : Caki-2 cells, human urine sample IF/ICC : HEK-293 cells,

Background Information

Glutaminyl-peptide cyclotransferase (QPCT) gene encodes glutaminyl cyclase (QC), an enzyme that plays a role in post-translational modification of proteins by converting N-terminal glutamate to pyroglutamine. QPCT plays a specific role in promoting tumor cell proliferation, migration and angiogenesis as well as in inhibiting tumor cell apoptosis in cancers such as thyroid cancer and renal cell carcinoma (PMID: 38417050). Human QPCT has two isoforms produced by alternative splicing, 41 kDa and 35 kDa, respectively.

Storage

Storage:
Store at -20°C. Stable for one year after shipment.
Storage Buffer:
PBS with 0.02% sodium azide and 50% glycerol, pH7.3
Aliquoting is unnecessary for -20°C storage

For technical support and original validation data for this product please contact:

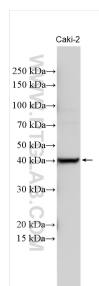
T: 4006900926

E: Proteintech-CN@ptglab.com

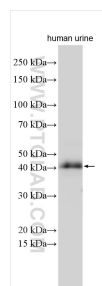
W: ptgcn.com

This product is exclusively available under Proteintech Group brand and is not available to purchase from any other manufacturer.

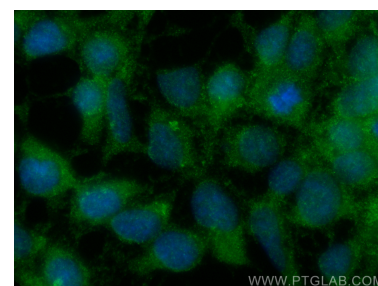
Selected Validation Data



Various lysates were subjected to SDS PAGE followed by western blot with 18571-1-AP (QPCT antibody) at dilution of 1:1000 incubated at room temperature for 1.5 hours.



Various lysates were subjected to SDS PAGE followed by western blot with 18571-1-AP (QPCT antibody) at dilution of 1:1000 incubated at room temperature for 1.5 hours.



Immunofluorescent analysis of (-20°C Ethanol) fixed HEK-293 cells using QPCT antibody (18571-1-AP) at dilution of 1:200 and CoraLite® 488-Conjugated Goat Anti-Rabbit IgG (H+L) (SA00013-2).