

For Research Use Only

Melan-A Polyclonal antibody

Catalog Number: 18472-1-AP **2 Publications**



Basic Information

Catalog Number: 18472-1-AP	GenBank Accession Number: BC014423	Purification Method: Antigen affinity purification
Size: 400 µg/ml	GeneID (NCBI): 2315	Recommended Dilutions: WB 1:200-1:1000 IHC 1:2000-1:8000
Source: Rabbit	UNIPROT ID: Q16655	
Isotype: IgG	Full Name: melan-A	
Immunogen Catalog Number: AG13346	Calculated MW: 13 kDa	
	Observed MW: 13-20 kDa	

Applications

Tested Applications: IHC, WB, ELISA	Positive Controls: WB : mouse eye tissue, IHC : human malignant melanoma tissue, human skin tissue
Cited Applications: WB, IHC	
Species Specificity: human, mouse	
Cited Species: mouse	
Note-IHC: suggested antigen retrieval with TE buffer pH 9.0; (*) Alternatively, antigen retrieval may be performed with citrate buffer pH 6.0	

Background Information

Melan-A is a palmitoylated integral membrane protein of 118 amino acids with a short amino-terminal luminal domain and a longer carboxy-terminal cytoplasmic domain. The protein does not possess any detectable enzymatic activity and has not been linked to any of the numerous genetic defects that affect skin pigmentation. Melan-A is new immunohistochemical markers that can be used in the diagnosis of melanocytic lesions. (PMID: 15703212, PMID: 17445277)

Notable Publications

Author	Pubmed ID	Journal	Application
Masaki Arioka	37981227	Life Sci	WB
Karnoon Shamsoun	37240209	Int J Mol Sci	IHC

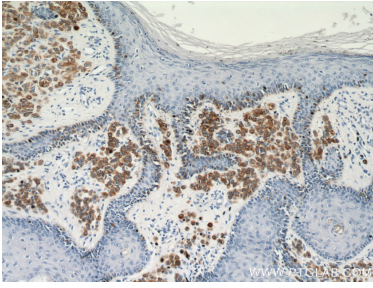
Storage

Storage:
Store at -20°C. Stable for one year after shipment.
Storage Buffer:
PBS with 0.02% sodium azide and 50% glycerol pH 7.3.
Aliquoting is unnecessary for -20°C storage

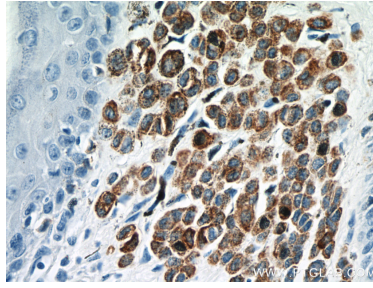
For technical support and original validation data for this product please contact:
T: 4006900926 E: Proteintech-CN@ptglab.com W: ptgcn.com

This product is exclusively available under Proteintech Group brand and is not available to purchase from any other manufacturer.

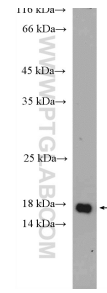
Selected Validation Data



Immunohistochemical analysis of paraffin-embedded human malignant melanoma tissue slide using 18472-1-AP (MLANA antibody) at dilution of 1:4000 (under 10x lens).



Immunohistochemical analysis of paraffin-embedded human malignant melanoma tissue slide using 18472-1-AP (MLANA antibody) at dilution of 1:4000 (under 40x lens).



mouse eye tissue were subjected to SDS PAGE followed by western blot with 18472-1-AP (MLANA Antibody) at dilution of 1:300 incubated at room temperature for 1.5 hours.