

For Research Use Only

PPIF Polyclonal antibody

Catalog Number: 18466-1-AP

10 Publications



Basic Information

Catalog Number:

18466-1-AP

Source:

Rabbit

Isotype:

IgG

Immunogen Catalog Number:

AG13151

GenBank Accession Number:

BC005020

GeneID (NCBI):

10105

UNIPROT ID:

P30405

Full Name:

peptidylprolyl isomerase F

Calculated MW:

22 kDa

Observed MW:

22 kDa

Purification Method:

Antigen affinity purification

Recommended Dilutions:

WB: 1:1000-1:4000

IP: 0.5-4.0 ug for 1.0-3.0 mg of total protein lysate

IHC: 1:100-1:400

IF/ICC: 1:10-1:100

Applications

Tested Applications:

WB, IHC, IF/ICC, IP, ELISA

Cited Applications:

WB, IHC, IF, CoIP

Species Specificity:

human, mouse, rat

Cited Species:

human, mouse, rat

Note-IHC: suggested antigen retrieval with TE buffer pH 9.0; (*) Alternatively, antigen retrieval may be performed with citrate buffer pH 6.0

Positive Controls:

WB: HeLa cells, HepG2 cells, human heart tissue, rat heart tissue, mouse heart tissue

IP: mouse heart tissue,

IHC: human heart tissue,

IF/ICC: MCF-7 cells,

Background Information

PPIF, also named as Cyclophilin D (CypD), CYP3, PPIase F and Rotamase F, belongs to the cyclophilin-type PPIase family. PPIases accelerate the folding of proteins. It catalyzes the cis-trans isomerization of proline imidic peptide bonds in oligopeptides. PPIF is a mitochondrial matrix protein involved in the induction of necrotic and apoptotic cell death through the activation of the mitochondrial permeability transition (mPT) pore. This antibody is immunized with full length gene PPIF and absorbed by PPIA. So this antibody is specific to PPIF.

Notable Publications

Author	Pubmed ID	Journal	Application
Jun Jia	36273900	Biol Pharm Bull	WB
Hao Liu	36245295	EMBO J	WB
Linlin Yang	33495413	Aging (Albany NY)	IHC

Storage

Storage:

Store at -20°C. Stable for one year after shipment.

Storage Buffer:

PBS with 0.02% sodium azide and 50% glycerol, pH7.3

Aliquoting is unnecessary for -20°C storage

For technical support and original validation data for this product please contact:

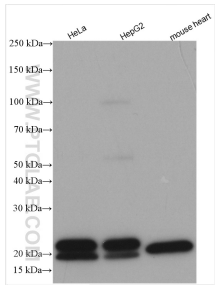
T: 4006900926

E: Proteintech-CN@ptglab.com

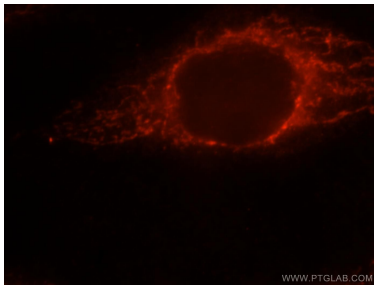
W: ptgcn.com

This product is exclusively available under Proteintech Group brand and is not available to purchase from any other manufacturer.

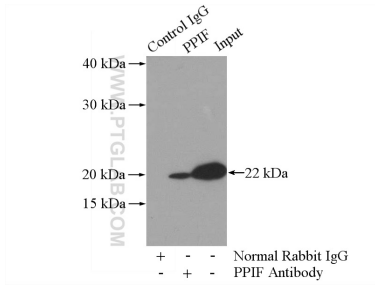
Selected Validation Data



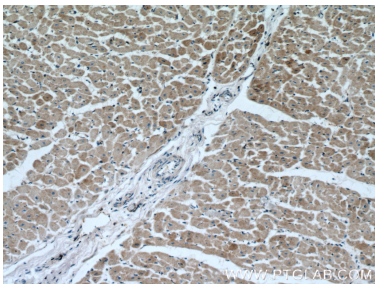
Various lysates were subjected to SDS PAGE followed by western blot with 18466-1-AP (PPIF antibody) at dilution of 1:2000 incubated at room temperature for 1.5 hours.



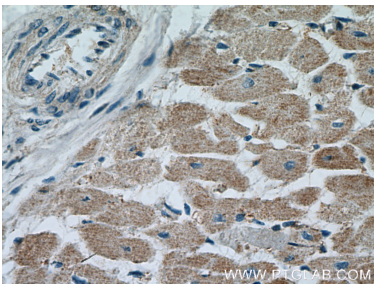
Immunofluorescent analysis of MCF-7 cells, using PPIF antibody 18466-1-AP at 1:25 dilution and Rhodamine-labeled goat anti-rabbit IgG (red).



IP result of anti-PPIF (IP:18466-1-AP, 3ug; Detection:18466-1-AP 1:1000) with mouse heart tissue lysate 4000ug.



Immunohistochemical analysis of paraffin-embedded human heart tissue slide using 18466-1-AP (PPIF Antibody) at dilution of 1:200 (under 10x lens).



Immunohistochemical analysis of paraffin-embedded human heart tissue slide using 18466-1-AP (CYPA Antibody) at dilution of 1:200 (under 40x lens).