

For Research Use Only

# Cathepsin V Polyclonal antibody

Catalog Number: 18442-1-AP

1 Publications



## Basic Information

Catalog Number:

18442-1-AP

Size:

300 ug/ml

Source:

Rabbit

Isotype:

IgG

Immunogen Catalog Number:

AG13284

GenBank Accession Number:

BC023504

GeneID (NCBI):

1515

UNIPROT ID:

O60911

Full Name:

cathepsin L2

Calculated MW:

37 kDa

Observed MW:

26-36 kDa

Purification Method:

Antigen affinity purification

Recommended Dilutions:

WB 1:500-1:1000

IHC 1:50-1:500

## Applications

Tested Applications:

WB, IHC, ELISA

Cited Applications:

IHC

Species Specificity:

human, mouse, rat

Cited Species:

human

**Note-IHC: suggested antigen retrieval with TE buffer pH 9.0; (\*) Alternatively, antigen retrieval may be performed with citrate buffer pH 6.0**

Positive Controls:

WB : mouse testis tissue, human testis tissue, rat liver tissue

IHC : human skin cancer tissue,

## Background Information

Cathepsin V is a lysosomal cysteine protease that has an important role in corneal physiology. Cathepsin V was found to be differentially expressed in relation to pigmentary skin backgrounds, and was about 7.5-folds higher in keratinocytes from lightly pigmented, relative to darkly pigmented skins. It is expressed in primary keratinocytes, melanocytes, and HaCaT keratinocytes, but not in primary fibroblasts. The purified cathepsin L2 was a high molecular weight proteinase of about 78 kDa, but it was unstable to SDS and reducing conditions, which dissociated parts of the proteinase into 66 kDa, 31 kDa and 26 kDa fragments (Food Chemistry, Volume 11, Issue 4, 879-886) and it can form a complex of 70 kDa with an unidentified subunit (PMID:1930136).

## Notable Publications

Author	Pubmed ID	Journal	Application
Junyu Liu	38051285	Mol Carcinog	IHC

## Storage

Storage:

Store at -20°C. Stable for one year after shipment.

Storage Buffer:

PBS with 0.02% sodium azide and 50% glycerol pH 7.3.

Aliquoting is unnecessary for -20°C storage

For technical support and original validation data for this product please contact:

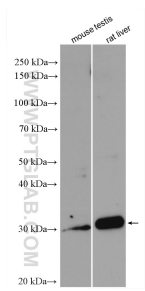
T: 4006900926

E: [Proteintech-CN@ptglab.com](mailto:Proteintech-CN@ptglab.com)

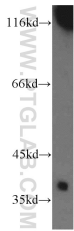
W: [ptgcn.com](http://ptgcn.com)

This product is exclusively available under Proteintech Group brand and is not available to purchase from any other manufacturer.

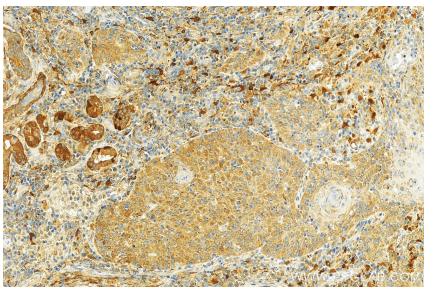
# Selected Validation Data



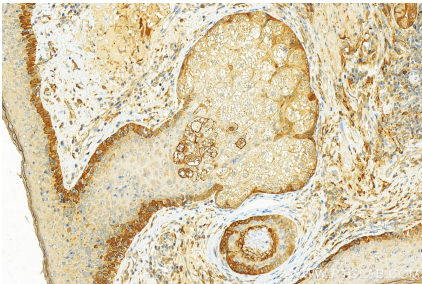
Various lysates were subjected to SDS PAGE followed by western blot with 18442-1-AP (Cathepsin V antibody) at dilution of 1:800 incubated at room temperature for 1.5 hours.



human testis tissue were subjected to SDS PAGE followed by western blot with 18442-1-AP (Cathepsin V antibody) at dilution of 1:800 incubated at room temperature for 1.5 hours.



Immunohistochemical analysis of paraffin-embedded skin cancer slide using 18442-1-AP (Cathepsin V antibody) at dilution of 1:200 (under 20x lens). Heat mediated antigen retrieval with Tris-EDTA buffer (pH 9.0).



Immunohistochemical analysis of paraffin-embedded skin cancer slide using 18442-1-AP (Cathepsin V antibody) at dilution of 1:200 (under 20x lens). Heat mediated antigen retrieval with Tris-EDTA buffer (pH 9.0).