

For Research Use Only

# RPP30 Polyclonal antibody, PBS Only

Catalog Number: 18435-1-PBS



## Basic Information

<b>Catalog Number:</b> 18435-1-PBS	<b>GenBank Accession Number:</b> BC006991	<b>Purification Method:</b> Antigen affinity purification
<b>Size:</b> 1 mg/ml	<b>GeneID (NCBI):</b> 10556	
<b>Source:</b> Rabbit	<b>UNIPROT ID:</b> P78346	
<b>Isotype:</b> IgG	<b>Full Name:</b> ribonuclease P/MRP 30kDa subunit	
<b>Immunogen Catalog Number:</b> AG8824	<b>Calculated MW:</b> 268 aa, 29 kDa	

## Applications

**Tested Applications:**  
IHC, IF/ICC, Indirect ELISA

**Species Specificity:**  
human, mouse, rat

## Background Information

RPP30 is part of the polyribonuclease P complex and the ribonuclease MRP complex, and is primarily involved in the 5' end maturation of tRNA, and may also be involved in other RNA metabolic processes, including RNA synthesis, processing, and maturation. RPP30 is widely expressed in a variety of tissues, including testis, lymph nodes, etc., and is also a potential biomarker for the diagnosis and prognosis of gastric cancer.

## Storage

**Storage:**  
Store at -80°C.  
**The product is shipped with ice packs. Upon receipt, store it immediately at -80°C**

**Storage Buffer:**  
PBS Only

For technical support and original validation data for this product please contact:

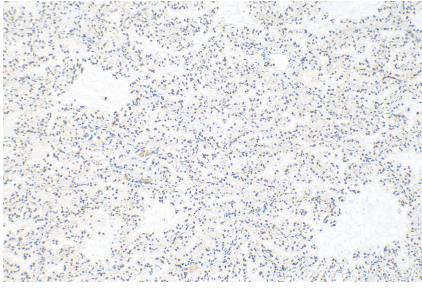
T: 4006900926

E: [Proteintech-CN@ptglab.com](mailto:Proteintech-CN@ptglab.com)

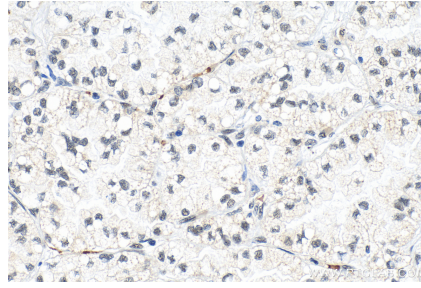
W: [ptgcn.com](http://ptgcn.com)

**This product is exclusively available under Proteintech Group brand and is not available to purchase from any other manufacturer.**

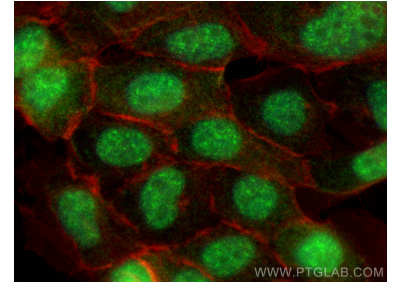
## Selected Validation Data



Immunohistochemical analysis of paraffin-embedded human lung cancer tissue slide using 18435-1-AP (RPP30 antibody) at dilution of 1:200 (under 10x lens). Heat mediated antigen retrieval with Tris-EDTA buffer (pH 9.0). This data was developed using the same antibody clone with 18435-1-PBS in a different storage buffer formulation.



Immunohistochemical analysis of paraffin-embedded human lung cancer tissue slide using 18435-1-AP (RPP30 antibody) at dilution of 1:200 (under 40x lens). Heat mediated antigen retrieval with Tris-EDTA buffer (pH 9.0). This data was developed using the same antibody clone with 18435-1-PBS in a different storage buffer formulation.



Immunofluorescent analysis of (4% PFA) fixed U-251 cells using RPP30 antibody (18435-1-AP) at dilution of 1:400 and CoraLite@488-Conjugated AffiniPure Goat Anti-Rabbit IgG(H+L), CL594-Phalloidin (red). This data was developed using the same antibody clone with 18435-1-PBS in a different storage buffer formulation.