

# PLD1 Polyclonal antibody

Catalog Number: 18355-1-AP

1 Publications

## Basic Information

## Catalog Number:

18355-1-AP

## Size:

550 µg/ml

## Source:

Rabbit

## Isotype:

IgG

## Immunogen Catalog Number:

AG13227

## GenBank Accession Number:

BC068976

## GeneID (NCBI):

5337

## UNIPROT ID:

Q13393

## Full Name:

phospholipase D1,  
phosphatidylcholine-specific

## Calculated MW:

1074 aa, 124 kDa

## Observed MW:

112-124 kDa

## Purification Method:

Antigen affinity purification

## Recommended Dilutions:

WB 1:1000-1:4000

IHC 1:50-1:500

IF/ICC 1:50-1:500

## Applications

## Tested Applications:

WB, IHC, IF/ICC, ELISA

## Cited Applications:

WB, IF

## Species Specificity:

human, mouse

## Cited Species:

human

**Note-IHC: suggested antigen retrieval with TE buffer pH 9.0; (\*) Alternatively, antigen retrieval may be performed with citrate buffer pH 6.0**

## Positive Controls:

WB : HeLa cells,

IHC : mouse heart tissue,

IF/ICC : HeLa cells,

## Background Information

PLD1(Phospholipase D1) belongs to the phospholipase D family. It is implicated in the release process of a variety of hormones, most likely at a late stage of exocytosis through the production of lipids that are essential for the fusion process and seem to be also essential for fast neurotransmitter release. PLD1 is primarily localized in vesicular structures such as endosomes, lysosomes, and autophagosomes.

## Notable Publications

Author	Pubmed ID	Journal	Application
Yoon Mee-Sup MS	22024166	J Cell Biol	WB,IF

## Storage

## Storage:

Store at -20°C. Stable for one year after shipment.

## Storage Buffer:

PBS with 0.02% sodium azide and 50% glycerol pH 7.3.

Aliquoting is unnecessary for -20°C storage

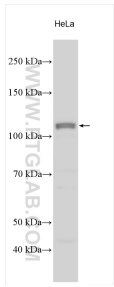
For technical support and original validation data for this product please contact:

T: 4006900926

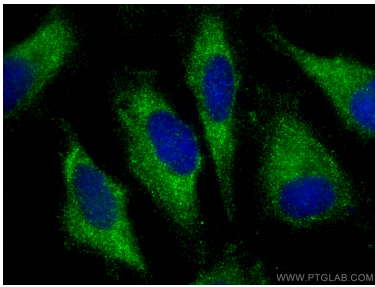
E: [Proteintech-CN@ptglab.com](mailto:Proteintech-CN@ptglab.com)W: [ptgcn.com](http://ptgcn.com)

This product is exclusively available under Proteintech Group brand and is not available to purchase from any other manufacturer.

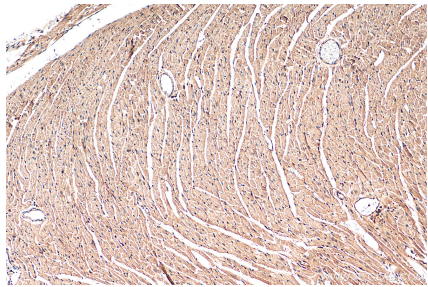
## Selected Validation Data



Various lysates were subjected to SDS PAGE followed by western blot with 18355-1-AP (PLD1 antibody) at dilution of 1:2000 incubated at room temperature for 1.5 hours.



Immunofluorescent analysis of (-20°C Ethanol) fixed HeLa cells using PLD1 antibody (18355-1-AP) at dilution of 1:200 and CoraLite®488-Conjugated AffiniPure Goat Anti-Rabbit IgG(H+L).



Immunohistochemical analysis of paraffin-embedded mouse heart tissue slide using 18355-1-AP (PLD1 antibody) at dilution of 1:200 (under 10x lens). Heat mediated antigen retrieval with Tris-EDTA buffer (pH 9.0).