

For Research Use Only

MRPS23 Polyclonal antibody

Catalog Number: 18345-1-AP

3 Publications



Basic Information

Catalog Number:

18345-1-AP

Size:

450 µg/ml

Source:

Rabbit

Isotype:

IgG

Immunogen Catalog Number:

AG13144

GenBank Accession Number:

BC000242

GeneID (NCBI):

51649

UNIPROT ID:

Q9Y3D9

Full Name:

mitochondrial ribosomal protein S23

Calculated MW:

22 kDa

Observed MW:

23-25 kDa

Purification Method:

Antigen affinity purification

Recommended Dilutions:

WB 1:1000-1:4000

IP 0.5-4.0 µg for 1.0-3.0 mg of total protein lysate

IHC 1:200-1:800

IF/ICC 1:50-1:500

Applications

Tested Applications:

WB, IHC, IF/ICC, IP, ELISA

Cited Applications:

WB

Species Specificity:

human, mouse, rat

Cited Species:

human

Note-IHC: suggested antigen retrieval with TE buffer pH 9.0; (*) Alternatively, antigen retrieval may be performed with citrate buffer pH 6.0

Positive Controls:

WB : HepG2 cells, MCF-7 cells

IP : HeLa cells,

IHC : human liver cancer tissue,

IF/ICC : HeLa cells,

Background Information

Notable Publications

Author	Pubmed ID	Journal	Application
Liangliang Min	39286071	Heliyon	WB
Taru Hilander	39015150	iScience	WB
Yuyang Liu	37917749	Science	WB

Storage

Storage:

Store at -20°C. Stable for one year after shipment.

Storage Buffer:

PBS with 0.02% sodium azide and 50% glycerol pH 7.3.

Aliquoting is unnecessary for -20°C storage

For technical support and original validation data for this product please contact:

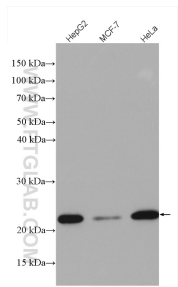
T: 4006900926

E: Proteintech-CN@ptglab.com

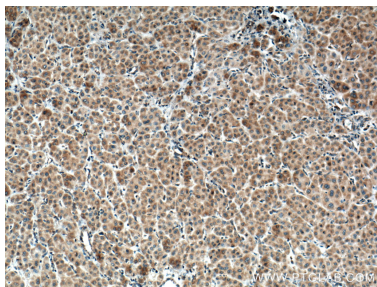
W: ptgcn.com

This product is exclusively available under Proteintech Group brand and is not available to purchase from any other manufacturer.

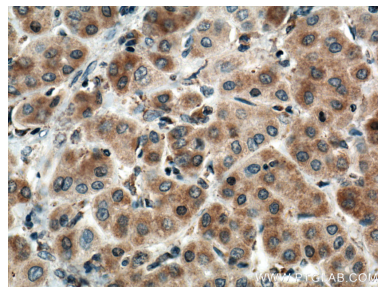
Selected Validation Data



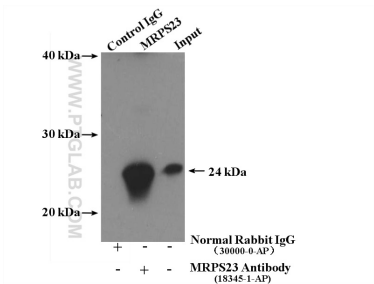
Various lysates were subjected to SDS PAGE followed by western blot with 18345-1-AP (MRPS23 antibody) at dilution of 1:2000 incubated at room temperature for 1.5 hours.



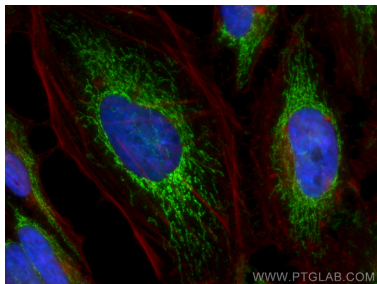
Immunohistochemical analysis of paraffin-embedded human liver cancer tissue slide using 18345-1-AP (MRPS23 antibody) at dilution of 1:400 (under 10x lens. Heat mediated antigen retrieval with Tris-EDTA buffer (pH 9.0).



Immunohistochemical analysis of paraffin-embedded human liver cancer tissue slide using 18345-1-AP (MRPS23 antibody) at dilution of 1:400 (under 40x lens. Heat mediated antigen retrieval with Tris-EDTA buffer (pH 9.0).



IP result of anti-MRPS23 (IP:18345-1-AP, 4ug; Detection:18345-1-AP 1:300) with HeLa cells lysate 2600ug.



Immunofluorescent analysis of (4% PFA) fixed HeLa cells using MRPS23 antibody (18345-1-AP) at dilution of 1:200 and CoraLite®488-Conjugated Goat Anti-Rabbit IgG(H+L), CL594-Phalloidin (red).