

For Research Use Only

SMAD6 Polyclonal antibody, PBS Only

Catalog Number:18342-1-PBS



Basic Information

Catalog Number: 18342-1-PBS	GenBank Accession Number: BC012986	Purification Method: Antigen affinity purification
Concentration: 1 mg/ml	GeneID (NCBI): 4091	
Source: Rabbit	UNIPROT ID: O43541	
Isotype: IgG	Full Name: SMAD family member 6	
Immunogen Catalog Number: AG13128	Calculated MW: 53 kDa	
	Observed MW: 52 kDa	

Applications

Tested Applications:
WB, Indirect ELISA

Species Specificity:
human, mouse

Background Information

SMAD6 is an intracellular signal transduction protein that belongs to the SMAD protein family. It acts as a negative regulator in the transforming growth factor-beta (TGF- β) signaling pathway, binding to TGF- β receptors and inhibiting the phosphorylation of SMAD2/SMAD3, thereby blocking the transmission of TGF- β signals. Additionally, SMAD6 is involved in the regulation of the bone morphogenetic protein (BMP) signaling pathway, affecting cell proliferation, differentiation, and apoptosis. During development, SMAD6 is crucial for the formation of bones and cartilage. Its abnormal expression is associated with various diseases, including skeletal developmental abnormalities and certain types of cancer.

Storage

Storage:
Store at -80°C.
The product is shipped with ice packs. Upon receipt, store it immediately at -80°C

Storage Buffer:
PBS only, pH7.3

For technical support and original validation data for this product please contact:

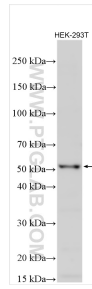
T: 4006900926

E: Proteintech-CN@ptglab.com

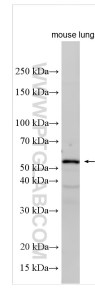
W: ptgcn.com

This product is exclusively available under Proteintech Group brand and is not available to purchase from any other manufacturer.

Selected Validation Data



Various lysates were subjected to SDS PAGE followed by western blot with 18342-1-AP (SMAD6 antibody) at dilution of 1:3000 incubated at room temperature for 1.5 hours. This data was developed using the same antibody clone with 18342-1-PBS in a different storage buffer formulation.



Various lysates were subjected to SDS PAGE followed by western blot with 18342-1-AP (SMAD6 antibody) at dilution of 1:1500 incubated at room temperature for 1.5 hours. This data was developed using the same antibody clone with 18342-1-PBS in a different storage buffer formulation.