

For Research Use Only

LSM14A Polyclonal antibody

Catalog Number: 18336-1-AP

Featured Product

13 Publications



Basic Information

Catalog Number:

18336-1-AP

Concentration:

400 ug/ml

Source:

Rabbit

Isotype:

IgG

Immunogen Catalog Number:

AG12997

GenBank Accession Number:

BC016842

GeneID (NCBI):

26065

UNIPROT ID:

Q8ND56

Full Name:

LSM14A, SCD6 homolog A (S. cerevisiae)

Calculated MW:

463 aa, 51 kDa

Observed MW:

60 kDa

Purification Method:

Antigen affinity purification

Recommended Dilutions:

WB 1:500-1:2000

IHC 1:20-1:200

IF/ICC 1:20-1:200

Applications

Tested Applications:

WB, IHC, IF/ICC, ELISA

Cited Applications:

WB, IF, CoIP

Species Specificity:

human

Cited Species:

human, mouse

Note-IHC: suggested antigen retrieval with TE buffer pH 9.0; (*) Alternatively, antigen retrieval may be performed with citrate buffer pH 6.0

Positive Controls:

WB : A549 cells, HeLa cells, PC-3 cells, HEK-293T cells, HepG2 cells, Jurkat cells

IHC : human testis tissue,

IF/ICC : HepG2 cells,

Background Information

LSm14A was originally discovered to be a component of the P-bodies, it is a member of the LSm family of proteins, which have been shown to be involved in RNA processing events. The N terminus of LSm14A is a conserved LSm domain, whereas the C terminus contains two domains called "DFDF box" and "FDF_TFG box", respectively.

Notable Publications

Author	Pubmed ID	Journal	Application
Xiao-Man Liu	34766549	Elife	WB,IF
Srikanth Kodali	39169219	Nat Cell Biol	WB
Michelle S Glossop	39119906	Nucleic Acids Res	IF

Storage

Storage:

Store at -20°C. Stable for one year after shipment.

Storage Buffer:

PBS with 0.02% sodium azide and 50% glycerol pH 7.3.

Aliquoting is unnecessary for -20°C storage

For technical support and original validation data for this product please contact:

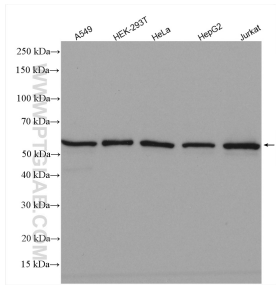
T: 4006900926

E: Proteintech-CN@ptglab.com

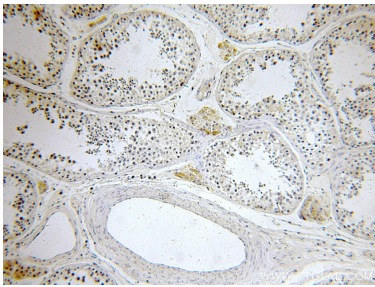
W: ptgcn.com

This product is exclusively available under Proteintech Group brand and is not available to purchase from any other manufacturer.

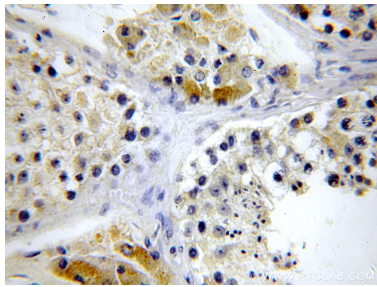
Selected Validation Data



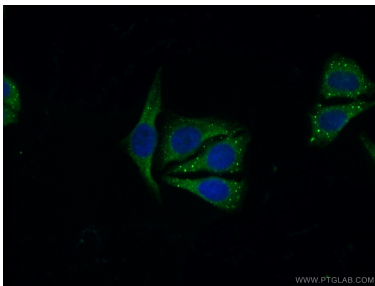
Various lysates were subjected to SDS PAGE followed by western blot with 18336-1-AP (LSM14A antibody) at dilution of 1:1000 incubated at room temperature for 1.5 hours.



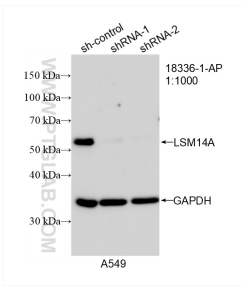
Immunohistochemical analysis of paraffin-embedded human testis using 18336-1-AP (LSM14A antibody) at dilution of 1:100 (under 10x lens).



Immunohistochemical analysis of paraffin-embedded human testis using 18336-1-AP (LSM14A antibody) at dilution of 1:100 (under 40x lens).



Immunofluorescent analysis of (10% Formaldehyde) fixed HepG2 cells using 18336-1-AP (LSM14A antibody) at dilution of 1:50 and Alexa Fluor 488-conjugated AffiniPure Goat Anti-Rabbit IgG(H+L).



WB result of LSM14A antibody (18336-1-AP; 1:1000; incubated at room temperature for 1.5 hours) with sh-Control and sh-LSM14A transfected A549 cells.