

MAD1 Polyclonal antibody

Catalog Number: 18322-1-AP

5 Publications

Basic Information

Catalog Number:

18322-1-AP

Size:

800 µg/ml

Source:

Rabbit

Isotype:

IgG

Immunogen Catalog Number:

AG13171

GenBank Accession Number:

BC009964

GeneID (NCBI):

8379

UNIPROT ID:

Q9Y6D9

Full Name:

MAD1 mitotic arrest deficient-like 1 (yeast)

Calculated MW:

83 kDa

Observed MW:

83 kDa

Purification Method:

Antigen affinity purification

Recommended Dilutions:

WB 1:2000-1:16000

IP 0.5-4.0 µg for 1.0-3.0 mg of total protein lysate

IHC 1:20-1:200

IF/ICC 1:50-1:500

Applications

Tested Applications:

WB, IHC, IF/ICC, IP, ELISA

Cited Applications:

WB, IF

Species Specificity:

human

Cited Species:

human, mouse

Note-IHC: suggested antigen retrieval with TE buffer pH 9.0; (*) Alternatively, antigen retrieval may be performed with citrate buffer pH 6.0

Positive Controls:

WB : A431 cells, human brain tissue, Raji cells, HeLa cells, HepG2 cells

IP : HeLa cells,

IHC : human brain tissue, human kidney tissue, human ovary tissue, human placenta tissue, human skin tissue, human spleen tissue, human testis tissue

IF/ICC : A431 cells, SH-SY5Y cells

Background Information

MAD1L1 is a component of the spindle-assembly checkpoint that prevents the onset of anaphase until all chromosomes are properly aligned at the metaphase plate. It recruits MAD2L1 to unattached kinetochores. Also it is required for anchoring MAD2L1 to the nuclear periphery. In addition, it binds to the TERT promoter and represses telomerase expression, possibly by interfering with MYC binding [PMID:10049595, 12837246].

Notable Publications

Author	Pubmed ID	Journal	Application
Carolina Villarroya-Beltri	36322655	Sci Adv	WB
Fengjie Yuan	31291454	Nucleic Acids Res	WB, IF
Sara M Reed	24621507	Cell Cycle	WB

Storage

Storage:

Store at -20°C. Stable for one year after shipment.

Storage Buffer:

PBS with 0.02% sodium azide and 50% glycerol pH 7.3.

Aliquoting is unnecessary for -20°C storage

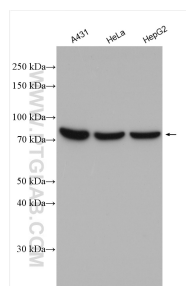
For technical support and original validation data for this product please contact:

T: 4006900926

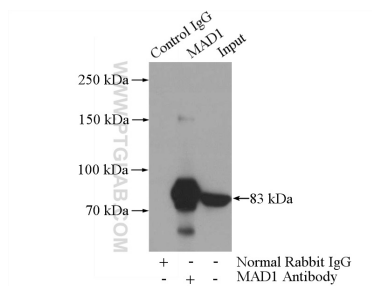
E: Proteintech-CN@ptglab.comW: ptgcn.com

This product is exclusively available under Proteintech Group brand and is not available to purchase from any other manufacturer.

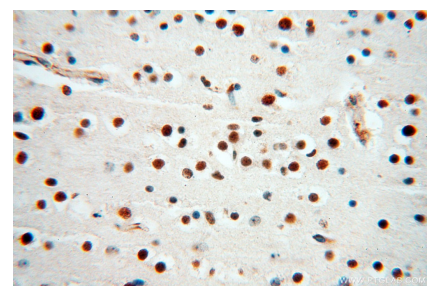
Selected Validation Data



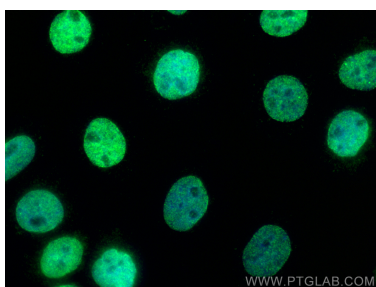
Various lysates were subjected to SDS PAGE followed by western blot with 18322-1-AP (MAD1 antibody) at dilution of 1:8000 incubated at room temperature for 1.5 hours.



IP result of anti-MAD1 (IP:18322-1-AP, 5ug; Detection:18322-1-AP 1:1000) with HeLa cells lysate 880ug.



Immunohistochemical analysis of paraffin-embedded human brain using 18322-1-AP (MAD1 antibody) at dilution of 1:100 (under 40x lens).



Immunofluorescent analysis of (4% PFA) fixed A431 cells using MAD1 antibody (18322-1-AP) at dilution of 1:200 and CoraLite®488-Conjugated AffiniPure Goat Anti-Rabbit IgG(H+L).