

# MEF2C-Specific Polyclonal antibody

Catalog Number: 18293-1-AP

## Basic Information

**Catalog Number:**

18293-1-AP

**Size:**

213 µg/ml

**Source:**

Rabbit

**Isotype:**

IgG

**GenBank Accession Number:**

NM\_002397

**GeneID (NCBI):**

4208

**UNIPROT ID:**

Q06413

**Full Name:**

myocyte enhancer factor 2C

**Calculated MW:**

51 kDa

**Observed MW:**

45-70 kDa

**Purification Method:**

Antigen affinity purification

**Recommended Dilutions:**

WB 1:500-1:1000

IHC 1:20-1:200

## Applications

**Tested Applications:**

IHC, WB, ELISA

**Species Specificity:**

human, mouse, rat

**Note-IHC: suggested antigen retrieval with TE buffer pH 9.0; (\*) Alternatively, antigen retrieval may be performed with citrate buffer pH 6.0**

**Positive Controls:**

WB : SH-SY5Y cells,

IHC : human testis tissue, human brain tissue, human kidney tissue, human lung tissue, human spleen tissue

## Background Information

MEF2C belongs to the MEF2 family. It is a transcription activator which binds specifically to the MEF2 element present in the regulatory regions of many muscle-specific genes. MEF2C controls cardiac morphogenesis and myogenesis, and is also involved in vascular development. It plays an essential role in hippocampal-dependent learning and memory by suppressing the number of excitatory synapses and thus regulating basal and evoked synaptic transmission. It is crucial for normal neuronal development, distribution, and electrical activity in the neocortex and is necessary for proper development of megakaryocytes and platelets and for bone marrow B lymphopoiesis. This protein is required for B-cell survival and proliferation in response to BCR stimulation, efficient IgG1 antibody responses to T-cell-dependent antigens and for normal induction of germinal center B cells. It may also be involved in neurogenesis and in the development of cortical architecture. The immunogen used is peptide from the specific sequence of MEF2C transcript variant 1 match to transcript variant 5. The antibody can recognize the transcript variant 1, transcript variant 2 and transcript variant 3 of MEF2C.

## Storage

**Storage:**

Store at -20°C. Stable for one year after shipment.

**Storage Buffer:**

PBS with 0.02% sodium azide and 50% glycerol pH 7.3.

Aliquoting is unnecessary for -20°C storage

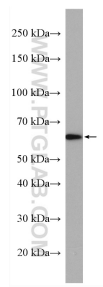
For technical support and original validation data for this product please contact:

T: 4006900926

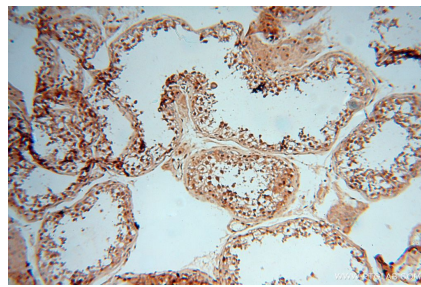
E: [Proteintech-CN@ptglab.com](mailto:Proteintech-CN@ptglab.com)W: [ptgcn.com](http://ptgcn.com)

**This product is exclusively available under Proteintech Group brand and is not available to purchase from any other manufacturer.**

## Selected Validation Data



SH-SY5Y cells were subjected to SDS PAGE followed by western blot with 18293-1-AP (MEF2C-Specific antibody) at dilution of 1:600 incubated at room temperature for 1.5 hours.



Immunohistochemical analysis of paraffin-embedded human testis using 18293-1-AP (MEF2C-Specific antibody) at dilution of 1:50 (under 10x lens).