

For Research Use Only

APOE Polyclonal antibody

Catalog Number: 18254-1-AP

Featured Product

17 Publications



Basic Information

Catalog Number:

18254-1-AP

Size:

550 µg/ml

Source:

Rabbit

Isotype:

IgG

Immunogen Catalog Number:

AG13070

GenBank Accession Number:

BC003557

GeneID (NCBI):

348

UNIPROT ID:

P02649

Full Name:

apolipoprotein E

Calculated MW:

36 kDa

Observed MW:

34-38 kDa

Purification Method:

Antigen affinity purification

Recommended Dilutions:

WB 1:1000-1:6000

IF 1:200-1:800

Applications

Tested Applications:

WB, IF/ICC, FC, ELISA

Cited Applications:

WB, IF, IHC

Species Specificity:

human

Cited Species:

human, mouse

Positive Controls:

WB : HepG2 cells,

IF : HepG2 cells,

Background Information

The apolipoprotein E (APOE) is a 299-amino acid polypeptide that mediates the binding, internalization, and catabolism of lipoprotein particles, and also serves as a ligand for the LDL (apo B/E) receptor and for the specific apo-E receptor (chylomicron remnant) of hepatic tissues. The very strong association of the APOE 4 allele with AD risk and its role in the accumulation of amyloid β in brains of people and animal models solidify the biological relevance of APOE isoforms but do not provide mechanistic insight. APOE can be detected 43kDa and 69kDa dimers (PMID: 9831633).

Notable Publications

Author	Pubmed ID	Journal	Application
Miao Liu	36063979	Life Sci	WB
Da-Yuan Chen	33140044	bioRxiv	WB
Xiaohui Liu	29123261	Br J Cancer	IHC

Storage

Storage:

Store at -20°C. Stable for one year after shipment.

Storage Buffer:

PBS with 0.02% sodium azide and 50% glycerol pH 7.3.

Aliquoting is unnecessary for -20°C storage

For technical support and original validation data for this product please contact:

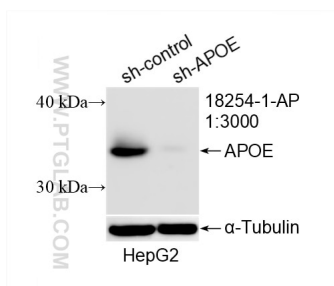
T: 4006900926

E: Proteintech-CN@ptglab.com

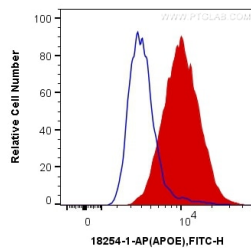
W: ptgcn.com

This product is exclusively available under Proteintech Group brand and is not available to purchase from any other manufacturer.

Selected Validation Data



WB result of APOE antibody (18254-1-AP; 1:3000; incubated at room temperature for 1.5 hours) with sh-Control and sh-APOE transfected HepG2 cells.



1×10^6 HepG2 cells were intracellularly stained with 0.4 μ g Anti-Human APOE (18254-1-AP) and CoraLite[®]488-Conjugated AffiniPure Goat Anti-Rabbit IgG(H+L) at dilution 1:1000 (red), or 0.4 μ g Control Antibody. Cells were fixed with 4% PFA and permeabilized with Flow Cytometry Perm Buffer (PF00011-C).

