

For Research Use Only

# GADL1 Polyclonal antibody, PBS Only

Catalog Number: 18240-1-PBS



## Basic Information

Catalog Number:

18240-1-PBS

Concentration:

1 mg/ml

Source:

Rabbit

Isotype:

IgG

Immunogen Catalog Number:

AG13005

GenBank Accession Number:

BC093701

GeneID (NCBI):

339896

UNIPROT ID:

Q6ZQY3

Full Name:

glutamate decarboxylase-like 1

Calculated MW:

39 kDa, 59 kDa, 47 kDa

Observed MW:

47 kDa

Purification Method:

Antigen affinity purification

## Applications

Tested Applications:

WB, IP, Indirect ELISA

Species Specificity:

human, mouse

## Background Information

### Storage

Storage:

Store at -80°C.

The product is shipped with ice packs. Upon receipt, store it immediately at -80°C

Storage Buffer:

PBS Only

For technical support and original validation data for this product please contact:

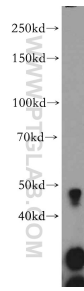
T: 4006900926

E: [Proteintech-CN@ptglab.com](mailto:Proteintech-CN@ptglab.com)

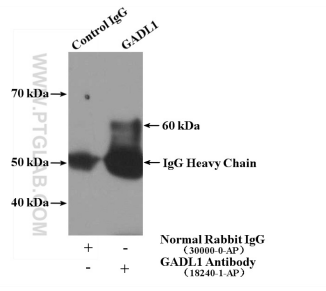
W: [ptgcn.com](http://ptgcn.com)

This product is exclusively available under Proteintech Group brand and is not available to purchase from any other manufacturer.

## Selected Validation Data



mouse cerebellum tissue were subjected to SDS PAGE followed by western blot with 18240-1-AP (GADL1 antibody) at dilution of 1:300 incubated at room temperature for 1.5 hours. This data was developed using the same antibody clone with 18240-1-PBS in a different storage buffer formulation.



IP result of anti-GADL1 (IP:18240-1-AP, 4ug; Detection:18240-1-AP 1:300) with mouse brain tissue lysate 4000ug. This data was developed using the same antibody clone with 18240-1-PBS in a different storage buffer formulation.