

For Research Use Only

TRPC6 Polyclonal antibody, PBS Only

Catalog Number: 18236-1-PBS

Featured Product



Basic Information

Catalog Number:

18236-1-PBS

Source:

Rabbit

Isotype:

IgG

Immunogen Catalog Number:

AG12976

GenBank Accession Number:

BC093658

GeneID (NCBI):

7225

UNIPROT ID:

Q9Y210

Full Name:

transient receptor potential cation channel, subfamily C, member 6

Calculated MW:

931 aa, 106 kDa

Observed MW:

100-110 kDa

Purification Method:

Antigen affinity purification

Applications

Tested Applications:

WB, IHC, IF/ICC, IF-P, FC (Intra), IP, Indirect ELISA

Species Specificity:

human, mouse

Background Information

Transient receptor potential canonical (TRPC) channels mediate the influx of different types of cations through the cell membrane and are involved in many functions of the organism (PMID: 28508319). The TRPC subfamily consists of seven members, TRPC1, TRPC2, TRPC3, TRPC4, TRPC5, TRPC6, TRPC7 (PMID: 32872338). TRPC6 is a Ca²⁺-permeable non-selective cation channel expressed in most human tissues. TRPC6 has been considered as potential therapeutic targets for malignant glioma treatment (PMID: 35489424).

Storage

Storage:

Store at -80°C.

The product is shipped with ice packs. Upon receipt, store it immediately at -80°C

Storage Buffer:

PBS only, pH7.3

For technical support and original validation data for this product please contact:

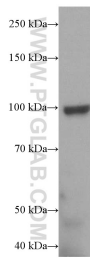
T: 4006900926

E: Proteintech-CN@ptglab.com

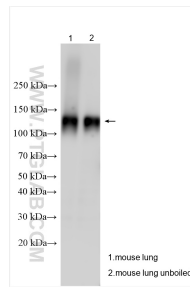
W: ptgcn.com

This product is exclusively available under Proteintech Group brand and is not available to purchase from any other manufacturer.

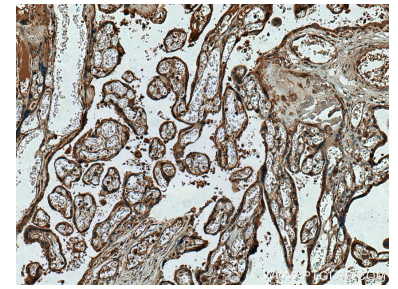
Selected Validation Data



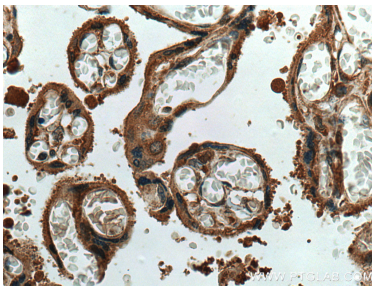
mouse brain tissue were subjected to SDS PAGE followed by western blot with 18236-1-AP (TRPC6 antibody) at dilution of 1:500. This data was developed using the same antibody clone with 18236-1-PBS in a different storage buffer formulation.



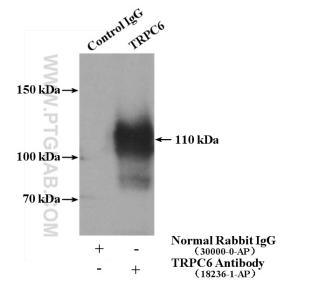
Various lysates were subjected to SDS PAGE followed by western blot with 18236-1-AP (TRPC6 antibody) at dilution of 1:1500 incubated at room temperature for 1.5 hours. This data was developed using the same antibody clone with 18236-1-PBS in a different storage buffer formulation.



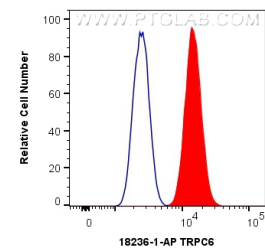
Immunohistochemical analysis of paraffin-embedded human placenta tissue slide using 18236-1-AP (TRPC6 antibody) at dilution of 1:200 (under 10x lens). Heat mediated antigen retrieval with Tris-EDTA buffer (pH 9.0). This data was developed using the same antibody clone with 18236-1-PBS in a different storage buffer formulation.



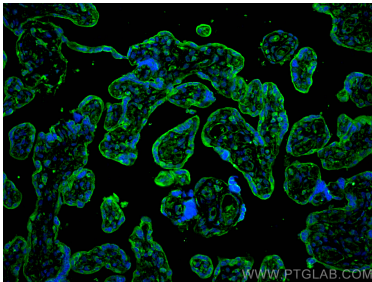
Immunohistochemical analysis of paraffin-embedded human placenta tissue slide using 18236-1-AP (TRPC6 antibody) at dilution of 1:200 (under 40x lens). Heat mediated antigen retrieval with Tris-EDTA buffer (pH 9.0). This data was developed using the same antibody clone with 18236-1-PBS in a different storage buffer formulation.



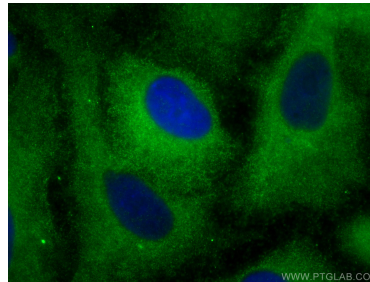
IP result of anti-TRPC6 (IP:18236-1-AP, 4ug; Detection:18236-1-AP 1:300) with mouse lung tissue lysate 3600ug. This data was developed using the same antibody clone with 18236-1-PBS in a different storage buffer formulation.



1×10^6 A549 cells were intracellularly stained with 0.4 ug Anti-Human TRPC6 (18236-1-AP) and CoraLite®488-Conjugated AffiniPure Goat Anti-Rabbit IgG(H+L) at dilution 1:1000 (red), or 0.4 ug Isotype Control. Cells were fixed with 4% PFA and permeabilized with Flow Cytometry Perm Buffer (PF00011-C). This data was developed using the same antibody clone with 18236-1-PBS in a different storage buffer formulation.



Immunofluorescent analysis of (4% PFA) fixed paraffin-embedded human placenta tissue using TRPC6 antibody (18236-1-AP) at dilution of 1:200 and Multi-Ab CoraLite® Plus 488-Goat Anti-Rabbit Recombinant Secondary Antibody (H+L) (RGAR002). Heat mediated antigen retrieval with Tris-EDTA buffer (pH 9.0). This data was developed using the same antibody clone with 18236-1-PBS in a different storage buffer formulation.



Immunofluorescent analysis of (-20°C Methanol) fixed A549 cells using TRPC6 antibody (18236-1-AP) at dilution of 1:400 and CoraLite®488-Conjugated AffiniPure Goat Anti-Rabbit IgG(H+L). This data was developed using the same antibody clone with 18236-1-PBS in a different storage buffer formulation.