

IκB Alpha Polyclonal antibody

Catalog Number: 18220-1-AP

10 Publications

Basic Information

Catalog Number:

18220-1-AP

Size:

1000 μg/ml

Source:

Rabbit

Isotype:

IgG

Immunogen Catalog Number:

AG12979

GenBank Accession Number:

BC004983

GeneID (NCBI):

4792

UNIPROT ID:

P25963

Full Name:

nuclear factor of kappa light polypeptide gene enhancer in B-cells inhibitor, alpha

Calculated MW:

36 kDa

Observed MW:

39 kDa

Purification Method:

Antigen affinity purification

Recommended Dilutions:

WB 1:500-1:3000

IP 0.5-4.0 ug for 1.0-3.0 mg of total protein lysate

IHC 1:50-1:500

IF/ICC 1:200-1:800

Applications

Tested Applications:

WB, IHC, IF/ICC, IP, ELISA

Cited Applications:

WB

Species Specificity:

human

Cited Species:

human, mouse, rat

Note-IHC: suggested antigen retrieval with TE buffer pH 9.0; (*) Alternatively, antigen retrieval may be performed with citrate buffer pH 6.0

Positive Controls:

WB : HL-60 cells, HeLa cells, Jurkat cells

IP : HeLa cells,

IHC : human kidney tissue, human liver tissue, human prostate cancer tissue, human stomach tissue

IF/ICC : HeLa cells,

Background Information

Nuclear factor of kappa light polypeptide gene enhancer in B-cells inhibitor, alpha (NFKBIA, synonyms: IKBA, MAD-3, NFKB1). NFKB1 or NFKB2 is bound to REL, RELA, or RELB to form the NFKB complex. The NFKB complex is inhibited by I-kappa-B proteins (NFKBIA or NFKBIB), which inactivate NF-kappa-B by trapping it in the cytoplasm. Phosphorylation of serine residues on the I-kappa-B proteins by kinases (IKBKA, or IKBKB) marks them for destruction via the ubiquitination pathway, thereby allowing activation of the NF-kappa-B complex. Activated NFKB complex translocates into the nucleus and binds DNA at kappa-B-binding motifs such as 5-prime GGGRNYYCC 3-prime or 5-prime HGGARNYYCC 3-prime.

Notable Publications

Author	Pubmed ID	Journal	Application
Xueling Zhou	33110436	Evid Based Complement Alternat Med	WB
Jian Zhan	27716383	J Neuroinflammation	WB
Qiang Tu	26647763	Mol Med Rep	WB

Storage

Storage:

Store at -20°C. Stable for one year after shipment.

Storage Buffer:

PBS with 0.02% sodium azide and 50% glycerol pH 7.3.

Aliquoting is unnecessary for -20°C storage

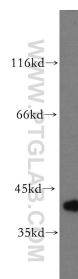
For technical support and original validation data for this product please contact:

T: 4006900926

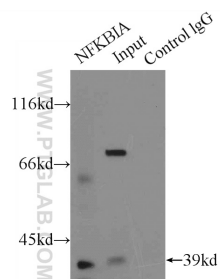
E: Proteintech-CN@ptglab.comW: ptgcn.com

This product is exclusively available under Proteintech Group brand and is not available to purchase from any other manufacturer.

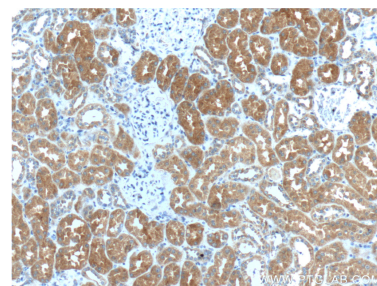
Selected Validation Data



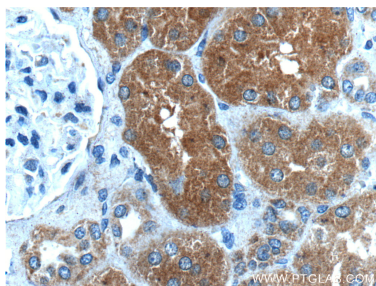
HL-60 cells were subjected to SDS PAGE followed by western blot with 18220-1-AP (IκB alpha antibody) at dilution of 1:500 incubated at room temperature for 1.5 hours.



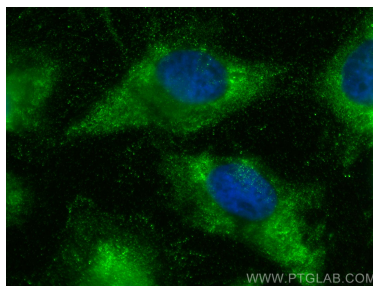
IP result of anti-IκB Alpha (IP:18220-1-AP, 5ug; Detection:18220-1-AP 1:500) with HeLa cells lysate 2000ug.



Immunohistochemical analysis of paraffin-embedded human kidney tissue slide using 18220-1-AP (IκB alpha antibody at dilution of 1:200 (under 10x lens).



Immunohistochemical analysis of paraffin-embedded human kidney tissue slide using 18220-1-AP (IκB alpha antibody at dilution of 1:200 (under 40x lens).



Immunofluorescent analysis of (4% PFA) fixed HeLa cells using IκB Alpha antibody (18220-1-AP) at dilution of 1:400 and CoraLite®488-Conjugated AffiniPure Goat Anti-Rabbit IgG(H+L).