

For Research Use Only

# PCDHAC2 Polyclonal antibody, PBS Only

Catalog Number: 18211-1-PBS



## Basic Information

<b>Catalog Number:</b> 18211-1-PBS	<b>GenBank Accession Number:</b> BC104776	<b>Purification Method:</b> Antigen affinity purification
<b>Source:</b> Rabbit	<b>GeneID (NCBI):</b> 56134	
<b>Isotype:</b> IgG	<b>UNIPROT ID:</b> Q9Y5I4	
<b>Immunogen Catalog Number:</b> AG12889	<b>Full Name:</b> protocadherin alpha subfamily C, 2	
	<b>Calculated MW:</b> 884 aa, 96 kDa	
	<b>Observed MW:</b> 120 kDa	

## Applications

**Tested Applications:**  
WB, Indirect ELISA

**Species Specificity:**  
human, mouse, rat

## Background Information

Protocadherins, which constitute the largest subgroup within the cadherin superfamily, are predominantly expressed in the nervous system and are probably involved in the regulation of neuronal recognition and connectivity (PMID: 17936607; 12231349; 17133224). The protocadherin subfamily can be further subdivided into three groups: the clustered protocadherins, comprising  $\alpha$ -,  $\beta$ -, and  $\gamma$ -protocadherins;  $\delta$ -protocadherins; and others, many of which are solitary (PMID: 17133224). PCDHAC2 is a subtype of  $\alpha$ -protocadherins, mainly expressed by serotonergic neurons. PCDHAC2 is essential for the diffuse projection of serotonergic axons (PMID: 29162883).

## Storage

**Storage:**  
Store at  $-80^{\circ}\text{C}$ .  
**The product is shipped with ice packs. Upon receipt, store it immediately at  $-80^{\circ}\text{C}$**

**Storage Buffer:**  
PBS only, pH7.3

For technical support and original validation data for this product please contact:

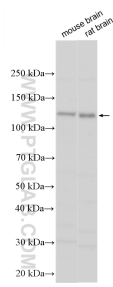
T: 4006900926

E: [Proteintech-CN@ptglab.com](mailto:Proteintech-CN@ptglab.com)

W: [ptgcn.com](http://ptgcn.com)

**This product is exclusively available under Proteintech Group brand and is not available to purchase from any other manufacturer.**

## Selected Validation Data



Various lysates were subjected to SDS PAGE followed by western blot with 18211-1-AP (PCDHAC2 antibody) at dilution of 1:1000 incubated at room temperature for 1.5 hours. This data was developed using the same antibody clone with 18211-1-PBS in a different storage buffer formulation.