

For Research Use Only

# PPM1L Polyclonal antibody

Catalog Number: 18203-1-AP **1 Publications**



## Basic Information

<b>Catalog Number:</b> 18203-1-AP	<b>GenBank Accession Number:</b> BC104885	<b>Purification Method:</b> Antigen affinity purification
<b>Size:</b> 400 µg/ml	<b>GeneID (NCBI):</b> 151742	<b>Recommended Dilutions:</b> WB 1:500-1:1000 IHC 1:20-1:200
<b>Source:</b> Rabbit	<b>UNIPROT ID:</b> Q5SGD2	
<b>Isotype:</b> IgG	<b>Full Name:</b> protein phosphatase 1 (formerly 2C)-like	
<b>Immunogen Catalog Number:</b> AG12775	<b>Calculated MW:</b> 26 kDa, 41 kDa	
	<b>Observed MW:</b> 41-45 kDa	

## Applications

<b>Tested Applications:</b> IHC, WB, ELISA	<b>Positive Controls:</b> WB: mouse kidney tissue, IHC: human kidney tissue, human heart tissue
<b>Cited Applications:</b> WB	
<b>Species Specificity:</b> human, mouse, rat	
<b>Cited Species:</b> human	
<b>Note-IHC: suggested antigen retrieval with TE buffer pH 9.0; (*) Alternatively, antigen retrieval may be performed with citrate buffer pH 6.0</b>	

## Background Information

PPM1L (Protein phosphatase 1L) is also named as PP2CE. It belongs to the PP2C group of serine/threonine phosphatases, which are distinguished from other phosphatases by their structure, absolute requirement for Mg(2+) or Mn(2+), and insensitivity to okadaic acid. It has 4 isoforms produced by alternative splicing. This antibody is specific to PPM1L.

## Notable Publications

Author	Pubmed ID	Journal	Application
Xiaoman Zhu	36096985	Cell Death Dis	WB

## Storage

**Storage:**  
Store at -20°C. Stable for one year after shipment.  
**Storage Buffer:**  
PBS with 0.02% sodium azide and 50% glycerol pH 7.3.  
Aliquoting is unnecessary for -20°C storage

For technical support and original validation data for this product please contact:

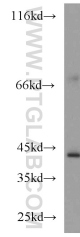
T: 4006900926

E: Proteintech-CN@ptglab.com

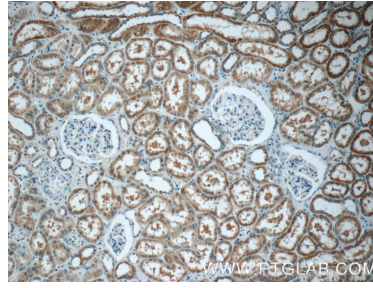
W: ptgcn.com

**This product is exclusively available under Proteintech Group brand and is not available to purchase from any other manufacturer.**

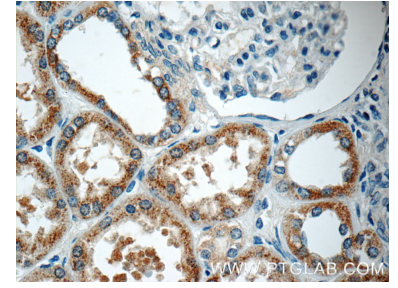
## Selected Validation Data



mouse kidney tissue were subjected to SDS PAGE followed by western blot with 18203-1-AP (PPM1L antibody) at dilution of 1:500 incubated at room temperature for 1.5 hours.



Immunohistochemical analysis of paraffin-embedded human kidney tissue slide using 18203-1-AP (PPM1L Antibody) at dilution of 1:50 (under 10x lens).



Immunohistochemical analysis of paraffin-embedded human kidney tissue slide using 18203-1-AP (PPM1L Antibody) at dilution of 1:50 (under 40x lens).