

For Research Use Only

LACTB Polyclonal antibody

Catalog Number: 18195-1-AP

Featured Product

12 Publications



Basic Information

Catalog Number:

18195-1-AP

Size:

500 µg/ml

Source:

Rabbit

Isotype:

IgG

Immunogen Catalog Number:

AG12233

GenBank Accession Number:

BC067288

GeneID (NCBI):

114294

UNIPROT ID:

P83111

Full Name:

lactamase, beta

Calculated MW:

547 aa, 61 kDa

Observed MW:

50-60 kDa

Purification Method:

Antigen affinity purification

Recommended Dilutions:

WB 1:1000-1:4000

IHC 1:50-1:500

IF/ICC 1:50-1:500

Applications

Tested Applications:

WB, IHC, IF/ICC, ELISA

Cited Applications:

WB, IHC, IF, IP

Species Specificity:

human

Cited Species:

human, mouse

Positive Controls:

WB : HepG2 cells, human heart tissue, HeLa cells

IHC : human liver cancer tissue,

IF/ICC : HeLa cells,

Note-IHC: suggested antigen retrieval with TE buffer pH 9.0; (*) Alternatively, antigen retrieval may be performed with citrate buffer pH 6.0

Background Information

LACTB is also named as MRPL56, which is a component of the large subunit of the mitochondrial ribosome that is encoded by the nuclear genome. LACTB is a mammalian active-site serine protein that has evolved from a bacterial penicillin-binding protein. It promotes intramitochondrial membrane organization and micro-compartmentalization through polymerization (PMID:19858488). Northern blot analysis of mouse tissues detected expression at high levels in liver, heart, and skeletal muscle, with lower levels in kidney, testis, brain, lung, and spleen (PMID:11707067). The full-length of LACTB is about 61 kDa, and a 115aa transit peptide can be removed in the mature form. This antibody is specific to LACTB.

Notable Publications

Author	Pubmed ID	Journal	Application
Juan M Gonzalez-Morena	36282364	Apoptosis	WB, IF
Valentina Cutano	36375842	Life Sci Alliance	WB, IHC, IF
Zuzana Keckesova	28329758	Nature	WB, IHC, IF

Storage

Storage:

Store at -20°C. Stable for one year after shipment.

Storage Buffer:

PBS with 0.02% sodium azide and 50% glycerol pH 7.3.

Aliquoting is unnecessary for -20°C storage

For technical support and original validation data for this product please contact:

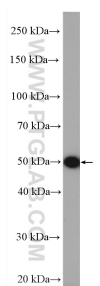
T: 4006900926

E: Proteintech-CN@ptglab.com

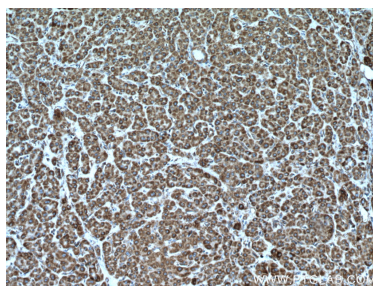
W: ptgcn.com

This product is exclusively available under Proteintech Group brand and is not available to purchase from any other manufacturer.

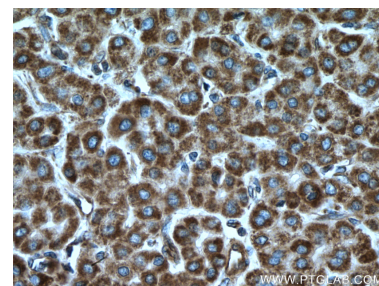
Selected Validation Data



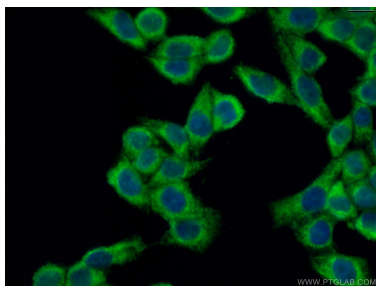
HepG2 cells were subjected to SDS PAGE followed by western blot with 18195-1-AP (LACTB antibody) at dilution of 1:2000 incubated at room temperature for 1.5 hours.



Immunohistochemical analysis of paraffin-embedded human liver cancer tissue slide using 18195-1-AP (LACTB antibody) at dilution of 1:200 (under 10x lens. Heat mediated antigen retrieval with Tris-EDTA buffer (pH 9.0).



Immunohistochemical analysis of paraffin-embedded human liver cancer tissue slide using 18195-1-AP (LACTB antibody) at dilution of 1:200 (under 40x lens. Heat mediated antigen retrieval with Tris-EDTA buffer (pH 9.0).



Immunofluorescent analysis of (4% PFA) fixed HeLa cells using 18195-1-AP (LACTB antibody) at dilution of 1:50 and Alexa Fluor 488-conjugated Goat Anti-Rabbit IgG(H+L).