

PAEP/Glycodelin Polyclonal antibody

Catalog Number: 18187-1-AP

1 Publications

Basic Information

Catalog Number:

18187-1-AP

Size:

300 µg/ml

Source:

Rabbit

Isotype:

IgG

Immunogen Catalog Number:

AG12902

GenBank Accession Number:

BC069562

GeneID (NCBI):

5047

UNIPROT ID:

P09466

Full Name:

progesterone-associated endometrial protein

Calculated MW:

180 aa, 21 kDa

Observed MW:

24-28 kDa

Purification Method:

Antigen affinity purification

Recommended Dilutions:

IHC 1:50-1:500

Applications

Tested Applications:

IHC, ELISA

Cited Applications:

IHC

Species Specificity:

human

Cited Species:

human

Positive Controls:

IHC : human endometrial cancer tissue,

Note-IHC: suggested antigen retrieval with TE buffer pH 9.0; (*) Alternatively, antigen retrieval may be performed with citrate buffer pH 6.0

Background Information

Glycodelin (also known as Progesterone Associated Endometrial Protein, PAEP, and Placental Protein 14, PP14) is a secreted human lipocalin-family protein mainly expressed in well-differentiated epithelial cells in human reproductive tissues, like endometrium and seminal vesicles. While different cells produce differentially glycosylated isoforms of Glycodelin: decidualized endometrium-derived glycodelin-A (GdA), seminal vesicle-derived glycodelin-S (GdS), glycodelin-F (isolated from follicular fluid), and glycodelin-C (isolated from cumulus cells). Glycodelin has been involved in cell differentiation and tumor growth.

Notable Publications

Author	Pubmed ID	Journal	Application
Qian Hao	34459128	Clin Transl Med	IHC

Storage

Storage:

Store at -20°C. Stable for one year after shipment.

Storage Buffer:

PBS with 0.02% sodium azide and 50% glycerol pH 7.3.

Aliquoting is unnecessary for -20°C storage

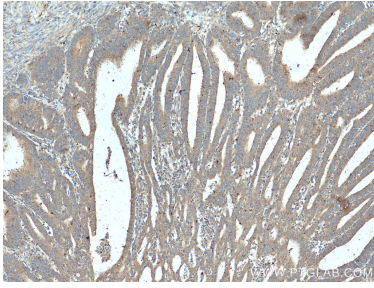
For technical support and original validation data for this product please contact:

T: 4006900926

E: Proteintech-CN@ptglab.comW: ptgcn.com

This product is exclusively available under Proteintech Group brand and is not available to purchase from any other manufacturer.

Selected Validation Data



Immunohistochemical analysis of paraffin-embedded human endometrial cancer tissue slide using 18187-1-AP (PAEP/Glycodelin antibody) at dilution of 1:200 (under 10x lens). Heat mediated antigen retrieval with Tris-EDTA buffer (pH 9.0).