

For Research Use Only

SLC28A3 Polyclonal antibody

Catalog Number: 18182-1-AP



Basic Information

Catalog Number: 18182-1-AP	GenBank Accession Number: BC093821	Purification Method: Antigen affinity purification
Size: 450 µg/ml	GeneID (NCBI): 64078	Recommended Dilutions: WB 1:500-1:1000 IHC 1:400-1:1600 IF 1:200-1:800
Source: Rabbit	UNIPROT ID: Q9HAS3	
Isotype: IgG	Full Name: solute carrier family 28 (sodium-coupled nucleoside transporter), member 3	
Immunogen Catalog Number: AG12887	Calculated MW: 691 aa, 77 kDa	
	Observed MW: 70-75 kDa	

Applications

Tested Applications: IF/ICC, IHC, WB, ELISA	Positive Controls: WB : HL-60 cells, mouse kidney tissue, mouse liver tissue IHC : human pancreas cancer tissue, IF : HepG2 cells,
Species Specificity: human, mouse	
Note-IHC: suggested antigen retrieval with TE buffer pH 9.0; (*) Alternatively, antigen retrieval may be performed with citrate buffer pH 6.0	

Background Information

SLC28A3 (Solute carrier family 28 member 3), also named CNT3, has sodium-dependent, pyrimidine- and purine-selective (PMID: 11032837, PMID: 15861042, PMID: 16446384, PMID: 17140564, PMID: 21998139). It is involved in the homeostasis of endogenous nucleosides (PMID: 11032837, PMID: 15861042). SLC28A3 is able to transport uridine, gemcitabine, 3'-azido-3'-deoxythymidine (AZT), ribavirin and 3-deazauridine (PMID: 21795683, PMID: 11032837, PMID: 17140564). SLC28A3, the human concentrative nucleoside transporter, plays a role in mediating the cellular entry of a broad array of physiological nucleosides and synthetic anticancer nucleoside analog drugs (PMID: 15738947). Variants in SLC28A3 and UGT1A6 act as genetic markers predictive of anthracycline-induced cardiotoxicity (PMID: 23441093).

Storage

Storage:
Store at -20°C. Stable for one year after shipment.
Storage Buffer:
PBS with 0.02% sodium azide and 50% glycerol pH 7.3.
Aliquoting is unnecessary for -20°C storage

For technical support and original validation data for this product please contact:

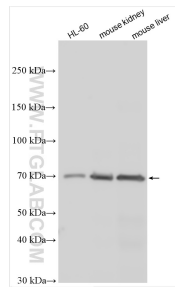
T: 4006900926

E: Proteintech-CN@ptglab.com

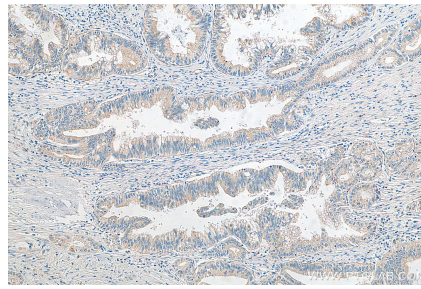
W: ptgcn.com

This product is exclusively available under Proteintech Group brand and is not available to purchase from any other manufacturer.

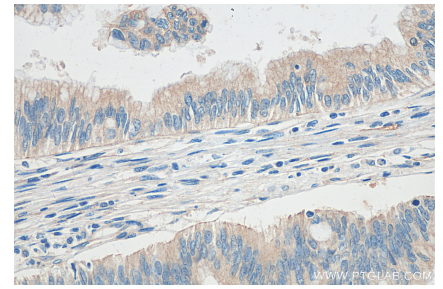
Selected Validation Data



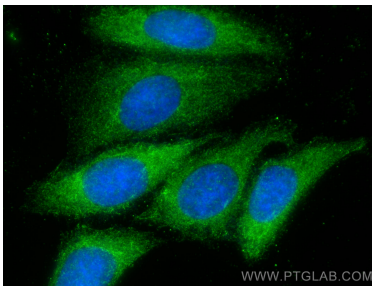
Various lysates were subjected to SDS PAGE followed by western blot with 18182-1-AP (SLC28A3 antibody) at dilution of 1:800 incubated at room temperature for 1.5 hours.



Immunohistochemical analysis of paraffin-embedded human pancreas cancer tissue slide using 18182-1-AP (SLC28A3 antibody) at dilution of 1:800 (under 10x lens). Heat mediated antigen retrieval with Tris-EDTA buffer (pH 9.0).



Immunohistochemical analysis of paraffin-embedded human pancreas cancer tissue slide using 18182-1-AP (SLC28A3 antibody) at dilution of 1:800 (under 40x lens). Heat mediated antigen retrieval with Tris-EDTA buffer (pH 9.0).



Immunofluorescent analysis of (-20°C Methanol) fixed HepG2 cells using SLC28A3 antibody (18182-1-AP) at dilution of 1:400 and CoraLite@488-Conjugated AffiniPure Goat Anti-Rabbit IgG(H+L).