

## CLEC4G Polyclonal antibody

Catalog Number: 18173-1-AP

1 Publications

## Basic Information

## Catalog Number:

18173-1-AP

## Size:

350 µg/ml

## Source:

Rabbit

## Isotype:

IgG

## Immunogen Catalog Number:

AG12837

## GenBank Accession Number:

BC093691

## GeneID (NCBI):

339390

## UNIPROT ID:

Q6UXB4

## Full Name:

C-type lectin domain family 4, member G

## Calculated MW:

293 aa, 33 kDa

## Observed MW:

40 kDa

## Purification Method:

Antigen affinity purification

## Recommended Dilutions:

IHC 1:500-1:2000

IF-P 1:50-1:500

## Applications

## Tested Applications:

IF-P, IHC, ELISA

## Cited Applications:

IF

## Species Specificity:

human

## Cited Species:

mouse

**Note-IHC: suggested antigen retrieval with TE buffer pH 9.0; (\*) Alternatively, antigen retrieval may be performed with citrate buffer pH 6.0**

## Positive Controls:

IHC : human liver tissue, human tonsillitis tissue

IF-P : human liver tissue,

## Background Information

CLEC4G, also known as LSECtin, is a member of the C-type lectin family of glycan-binding receptors that is expressed on sinusoidal endothelial cells in liver and lymph nodes. CLEC4G is a type II transmembrane protein of 40 kDa in size with a single C-type lectin-like domain at the COOH terminus, closest in homology to DC-SIGNR, DC-SIGN, and CD23. CLEC4G has been reported as a receptor for Japanese encephalitis virus (PubMed:24623090), ebolavirus (PubMed:16051304), SARS coronavirus/SARS-CoV (PubMed:16051304), lassa virus and Lymphocytic choriomeningitis virus glycoprotein (PubMed:22156524, PubMed:22673088).

## Notable Publications

Author	Pubmed ID	Journal	Application
Kiryu K Yap	38681862	JHEP Rep	IF

## Storage

## Storage:

Store at -20°C. Stable for one year after shipment.

## Storage Buffer:

PBS with 0.02% sodium azide and 50% glycerol pH 7.3.

Aliquoting is unnecessary for -20°C storage

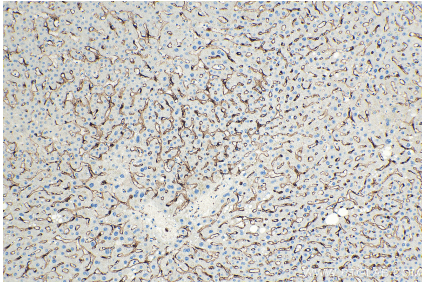
For technical support and original validation data for this product please contact:

T: 4006900926

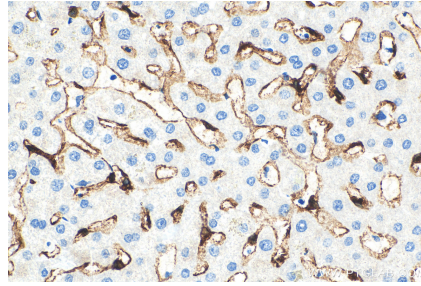
E: [Proteintech-CN@ptglab.com](mailto:Proteintech-CN@ptglab.com)W: [ptgcn.com](http://ptgcn.com)

This product is exclusively available under Proteintech Group brand and is not available to purchase from any other manufacturer.

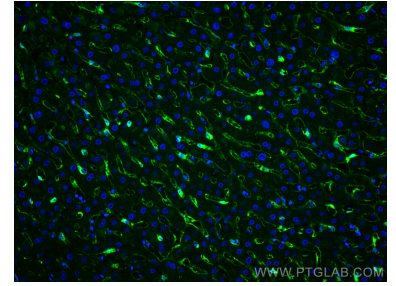
## Selected Validation Data



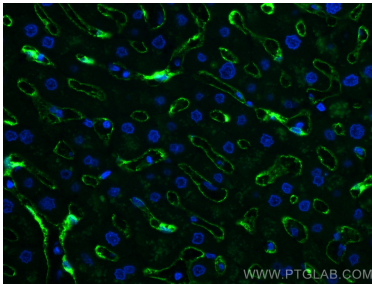
Immunohistochemical analysis of paraffin-embedded human liver tissue slide using 18173-1-AP (CLEC4G antibody) at dilution of 1:1000 (under 10x lens). Heat mediated antigen retrieval with Tris-EDTA buffer (pH 9.0).



Immunohistochemical analysis of paraffin-embedded human liver tissue slide using 18173-1-AP (CLEC4G antibody) at dilution of 1:1000 (under 40x lens). Heat mediated antigen retrieval with Tris-EDTA buffer (pH 9.0).



Immunofluorescent analysis of (4% PFA) fixed human liver tissue using CLEC4G antibody (18173-1-AP) at dilution of 1:200 and CoraLite®488-Conjugated AffiniPure Goat Anti-Rabbit IgG(H+L).



Immunofluorescent analysis of (4% PFA) fixed human liver tissue using CLEC4G antibody (18173-1-AP) at dilution of 1:200 and CoraLite®488-Conjugated AffiniPure Goat Anti-Rabbit IgG(H+L).