

For Research Use Only

WISP-1/CCN4 Polyclonal antibody

Catalog Number: 18166-1-AP

Featured Product

9 Publications



Basic Information

Catalog Number:

18166-1-AP

Concentration:

600 ug/ml

Source:

Rabbit

Isotype:

IgG

Immunogen Catalog Number:

AG12657

GenBank Accession Number:

BC074841

GeneID (NCBI):

8840

UNIPROT ID:

O95388

Full Name:

WNT1 inducible signaling pathway protein 1

Calculated MW:

367 aa, 40 kDa

Observed MW:

40-45 kDa

Purification Method:

Antigen affinity purification

Recommended Dilutions:

WB: 1:1000-1:4000

IHC: 1:50-1:500

Applications

Tested Applications:

WB, IHC, ELISA

Cited Applications:

WB, IHC, IF

Species Specificity:

human, mouse

Cited Species:

human

Note-IHC: suggested antigen retrieval with TE buffer pH 9.0; (*) Alternatively, antigen retrieval may be performed with citrate buffer pH 6.0

Positive Controls:

WB : COLO 320 cells, HEK-293 cells, mouse testis tissue, mouse liver tissue

IHC : human stomach cancer tissue, human small intestine tissue, human lung cancer tissue

Background Information

WISP1(Wnt-induced secreted protein 1), also known as CCN4, is a secreted, matricellular protein allocated to the CCN protein family. The CCN protein family consists of six, modular structured, secreted proteins (Cyr61, CTGF, Nov, WISP1, WISP2, WISP3). WISP1 may be downstream in the WNT1 signaling pathway that is relevant to malignant transformation. WISP1 is expressed at a high level in fibroblast cells, and overexpressed in colon tumors. Its expression is associated with proliferation, cytoprotection, as well as extracellular matrix production. 18166-1-AP antibody detects the 40-45 kDa protein in SDS-PAGE.

Notable Publications

Author	Pubmed ID	Journal	Application
Jian-Yu Yang	26550461	Am J Transl Res	WB,IHC
Di Jing	28902353	Int J Oncol	
Huihui Ren	36267574	Front Physiol	IHC

Storage

Storage:

Store at -20°C. Stable for one year after shipment.

Storage Buffer:

PBS with 0.02% sodium azide and 50% glycerol, pH7.3

Aliquoting is unnecessary for -20°C storage

For technical support and original validation data for this product please contact:

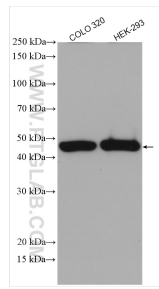
T: 4006900926

E: Proteintech-CN@ptglab.com

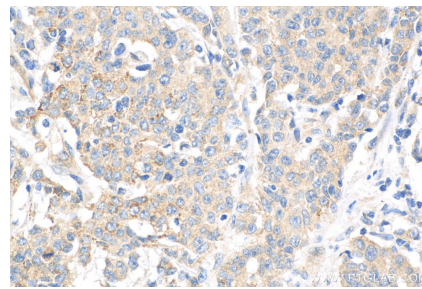
W: ptgcn.com

This product is exclusively available under Proteintech Group brand and is not available to purchase from any other manufacturer.

Selected Validation Data



Various lysates were subjected to SDS PAGE followed by western blot with 18166-1-AP (WISP-1/CCN4 antibody) at dilution of 1:2000 incubated at room temperature for 1.5 hours.



Immunohistochemical analysis of paraffin-embedded human stomach cancer tissue slide using 18166-1-AP (WISP-1/CCN4 antibody) at dilution of 1:200 (under 40x lens). Heat mediated antigen retrieval with Tris-EDTA buffer (pH 9.0).