

For Research Use Only

MYL6 Polyclonal antibody, PBS Only

Catalog Number: 18158-1-PBS



Basic Information

Catalog Number:

18158-1-PBS

Size:

1 mg/ml

Source:

Rabbit

Isotype:

IgG

Immunogen Catalog Number:

AG12964

GenBank Accession Number:

BC006781

GeneID (NCBI):

4637

UNIPROT ID:

P60660

Full Name:

myosin, light chain 6, alkali, smooth muscle and non-muscle

Calculated MW:

17 kDa

Observed MW:

15-20 kDa

Purification Method:

Antigen affinity purification

Applications

Tested Applications:

WB, IHC, IF/ICC, Indirect ELISA

Species Specificity:

human, mouse, rat

Background Information

Myosin is a hexameric ATPase cellular motor protein. It is composed of two heavy chains, two nonphosphorylatable alkali light chains, and two phosphorylatable regulatory light chains. MYL6 (Myosin light polypeptide 6), encodes a myosin alkali light chain that is expressed in smooth muscle and non-muscle tissues. Expression of MYL6 is high in fibroblasts and myoblasts (PMID:8188229, PubMed:2304459, PMID:2722814).

Storage

Storage:

Store at -80°C.

The product is shipped with ice packs. Upon receipt, store it immediately at -80°C

Storage Buffer:

PBS Only

For technical support and original validation data for this product please contact:

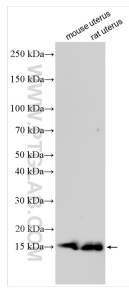
T: 4006900926

E: Proteintech-CN@ptglab.com

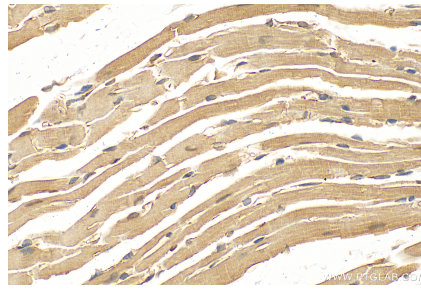
W: ptgcn.com

This product is exclusively available under Proteintech Group brand and is not available to purchase from any other manufacturer.

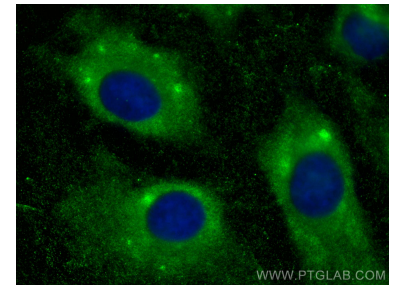
Selected Validation Data



Various lysates were subjected to SDS PAGE followed by western blot with 18158-1-AP (MYL6 antibody) at dilution of 1:4000 incubated at room temperature for 1.5 hours. This data was developed using the same antibody clone with 18158-1-PBS in a different storage buffer formulation.



Immunohistochemical analysis of paraffin-embedded mouse heart tissue slide using 18158-1-AP (MYL6 antibody) at dilution of 1:400 (under 40x lens). Heat mediated antigen retrieval with Tris-EDTA buffer (pH 9.0). This data was developed using the same antibody clone with 18158-1-PBS in a different storage buffer formulation.



Immunofluorescent analysis of (-20°C Methanol) fixed HeLa cells using MYL6 antibody (18158-1-AP) at dilution of 1:400 and CoraLite®488-Conjugated AffiniPure Goat Anti-Rabbit IgG(H+L). This data was developed using the same antibody clone with 18158-1-PBS in a different storage buffer formulation.