

For Research Use Only

# PDE6G/H Polyclonal antibody

Catalog Number: 18151-1-AP



## Basic Information

### Catalog Number:

18151-1-AP

### Size:

550 µg/ml

### Source:

Rabbit

### Isotype:

IgG

### Immunogen Catalog Number:

AG12847

### GenBank Accession Number:

BC093738

### GeneID (NCBI):

5149

### UNIPROT ID:

Q13956

### Full Name:

phosphodiesterase 6H, cGMP-specific,  
cone, gamma

### Calculated MW:

83 aa, 9 kDa

### Observed MW:

9 kDa

### Purification Method:

Antigen affinity purification

### Recommended Dilutions:

WB 1:200-1:1000

IP 0.5-4.0 µg for 1.0-3.0 mg of total  
protein lysate

## Applications

### Tested Applications:

IP, WB, ELISA

### Species Specificity:

human, mouse, rat

### Positive Controls:

WB : mouse eye tissue, rat retina tissue

IP : mouse eye tissue,

## Background Information

## Storage

### Storage:

Store at -20°C. Stable for one year after shipment.

### Storage Buffer:

PBS with 0.02% sodium azide and 50% glycerol pH 7.3.

Aliquoting is unnecessary for -20°C storage

For technical support and original validation data for this product please contact:

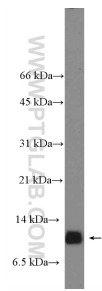
T: 4006900926

E: [Proteintech-CN@ptglab.com](mailto:Proteintech-CN@ptglab.com)

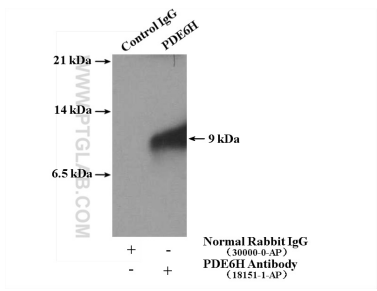
W: [ptgcn.com](http://ptgcn.com)

This product is exclusively available under Proteintech Group brand and is not available to purchase from any other manufacturer.

Selected Validation Data



mouse eye tissue were subjected to SDS PAGE followed by western blot with 18151-1-AP (PDE6H Antibody) at dilution of 1:300 incubated at room temperature for 1.5 hours.



IP result of anti-PDE6G/H (IP:18151-1-AP, 4ug; Detection:18151-1-AP 1:300) with mouse eye tissue lysate 4000 ug.