

For Research Use Only

# ABCD1 Polyclonal antibody

Catalog Number: 18138-1-AP

Featured Product

2 Publications



## Basic Information

### Catalog Number:

18138-1-AP

### Size:

350 ug/ml

### Source:

Rabbit

### Isotype:

IgG

### Immunogen Catalog Number:

AG12757

### GenBank Accession Number:

BC025358

### GeneID (NCBI):

215

### UNIPROT ID:

P33897

### Full Name:

ATP-binding cassette, sub-family D (ALD), member 1

### Calculated MW:

745 aa, 83 kDa

### Observed MW:

75 kDa

### Purification Method:

Antigen affinity purification

### Recommended Dilutions:

WB 1:500-1:3000

IP 0.5-4.0 ug for 1.0-3.0 mg of total protein lysate

IHC 1:50-1:500

IF/ICC 1:500-1:2000

## Applications

### Tested Applications:

WB, IHC, IF/ICC, FC (Intra), IP, ELISA

### Cited Applications:

WB

### Species Specificity:

human

### Cited Species:

human

**Note-IHC: suggested antigen retrieval with TE buffer pH 9.0; (\*) Alternatively, antigen retrieval may be performed with citrate buffer pH 6.0**

### Positive Controls:

WB : HepG2 cells, HeLa cells

IP : HeLa cells,

IHC : human ovary cancer tissue,

IF/ICC : HeLa cells,

## Background Information

ABCD1 (also known as ALDP) is a member of the ATP-binding cassette (ABC) transporter superfamily which functions as transporter for a wide variety of substrates. It localizes to the peroxisomal membrane. The exact function is not clear so far. Various mutations of ABCD1 cause X-linked adrenoleukodystrophy (X-ALD), an inherited neurodegenerative disease affecting the nervous system white matter and adrenal cortex.

## Notable Publications

Author	Pubmed ID	Journal	Application
Tatsuo Miyamoto	32368833	EMBO J	WB
Chao Xiong	36810450	Signal Transduct Target Ther	WB

## Storage

### Storage:

Store at -20°C. Stable for one year after shipment.

### Storage Buffer:

PBS with 0.02% sodium azide and 50% glycerol pH 7.3.

Aliquoting is unnecessary for -20°C storage

For technical support and original validation data for this product please contact:

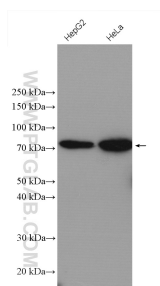
T: 4006900926

E: [Proteintech-CN@ptglab.com](mailto:Proteintech-CN@ptglab.com)

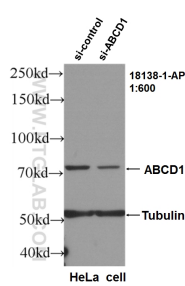
W: [ptgcn.com](http://ptgcn.com)

This product is exclusively available under Proteintech Group brand and is not available to purchase from any other manufacturer.

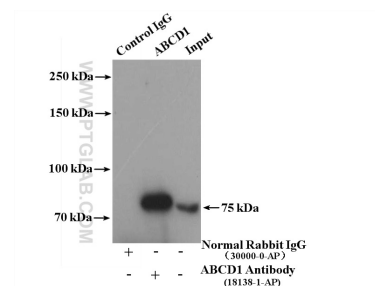
## Selected Validation Data



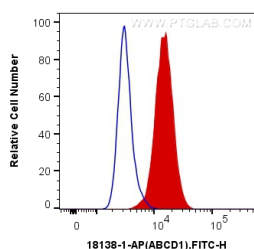
Various lysates were subjected to SDS PAGE followed by western blot with 18138-1-AP (ABCD1 antibody) at dilution of 1:600 incubated at room temperature for 1.5 hours.



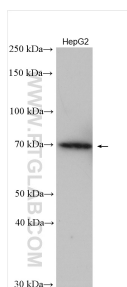
WB result of ABCD1 antibody (18138-1-AP, 1:600) with si-Control and si-ABCD1 transfected HeLa cells..



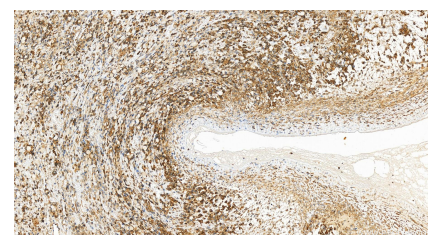
IP result of anti-ABCD1 (IP:18138-1-AP, 4ug; Detection:18138-1-AP 1:700) with HeLa cells lysate 3000 ug.



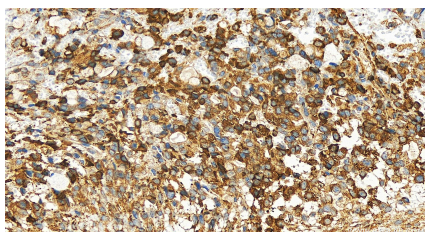
1X10<sup>6</sup> HeLa cells were intracellularly stained with 0.4 ug Anti-Human ABCD1 (18138-1-AP) and CoraLite®488-Conjugated AffiniPure Goat Anti-Rabbit IgG(H+L) at dilution 1:1000 (red), or 0.4 ug Control Antibody. Cells were fixed with 4% PFA and permeabilized with Flow Cytometry Perm Buffer (PF00011-C).



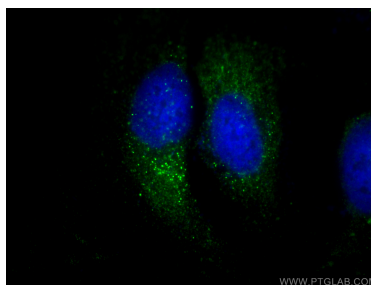
HepG2 cells were subjected to SDS PAGE followed by western blot with 18138-1-AP (ABCD1 antibody) at dilution of 1:1500 incubated at room temperature for 1.5 hours.



Immunohistochemical analysis of paraffin-embedded human ovary cancer tissue slide using 18138-1-AP (ABCD1 antibody) at dilution of 1:200 (under 20x lens). Heat mediated antigen retrieval with Tris-EDTA buffer (pH 9.0).



Immunohistochemical analysis of paraffin-embedded human ovary cancer tissue slide using 18138-1-AP (ABCD1 antibody) at dilution of 1:200 (under 20x lens). Heat mediated antigen retrieval with Tris-EDTA buffer (pH 9.0).



Immunofluorescent analysis of (-20°C Methanol) fixed HeLa cells using ABCD1 antibody (18138-1-AP) at dilution of 1:1000 and Multi-rAb CoraLite® Plus 488-Goat Anti-Rabbit Recombinant Secondary Antibody (H+L) (RGAR002).