

For Research Use Only

MSH6 Polyclonal antibody

Catalog Number: 18120-1-AP

Featured Product

13 Publications



Basic Information

Catalog Number:

18120-1-AP

Concentration:

260 ug/ml

Source:

Rabbit

Isotype:

IgG

Immunogen Catalog Number:

AG12645

GenBank Accession Number:

BC004246

GeneID (NCBI):

2956

UNIPROT ID:

P52701

Full Name:

mutS homolog 6 (E. coli)

Calculated MW:

153 kDa

Observed MW:

150-160 kDa

Purification Method:

Antigen affinity purification

Recommended Dilutions:

WB 1:500-1:3000

IP 0.5-4.0 ug for 1.0-3.0 mg of total protein lysate

IHC 1:800-1:3200

IF/ICC 1:50-1:500

Applications

Tested Applications:

WB, IHC, IF/ICC, IP, ELISA

Cited Applications:

WB, IHC, IF, IP

Species Specificity:

human, mouse, rat

Cited Species:

human, mouse

Note-IHC: suggested antigen retrieval with TE buffer pH 9.0; (*) Alternatively, antigen retrieval may be performed with citrate buffer pH 6.0

Positive Controls:

WB : HEK-293 cells, HEK-293

IP : HEK-293 cells,

IHC : human colon tissue,

IF/ICC : HeLa cells,

Background Information

MSH6, also named as DNA mismatch repair protein Msh6 or GTMBP, is a 1360 amino acid protein, which contains one PWWP domain and belongs to the DNA mismatch repair MutS family. MSH6 localizes in the nucleus and is a component of the post-replicative DNA mismatch repair system. Msh2 and Msh6 form a protein complex required to repair mismatches generated during DNA replication.

Notable Publications

Author	Pubmed ID	Journal	Application
Etsuko Yokota	29262545	Oncotarget	WB
Ying Shi	33181035	DNA Cell Biol	WB
Xuting Ran	35664732	Front Oncol	IHC

Storage

Storage:

Store at -20°C. Stable for one year after shipment.

Storage Buffer:

PBS with 0.02% sodium azide and 50% glycerol pH 7.3.

Aliquoting is unnecessary for -20°C storage

For technical support and original validation data for this product please contact:

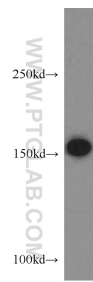
T: 4006900926

E: Proteintech-CN@ptglab.com

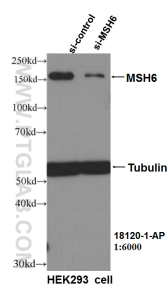
W: ptgcn.com

This product is exclusively available under Proteintech Group brand and is not available to purchase from any other manufacturer.

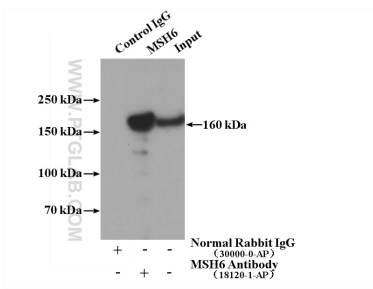
Selected Validation Data



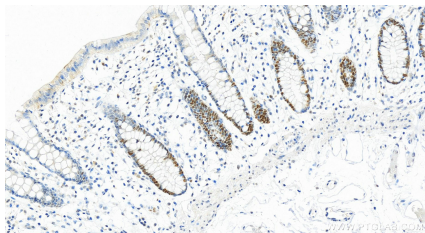
HEK-293 cells were subjected to SDS PAGE followed by western blot with 18120-1-AP (MSH6 antibody) at dilution of 1:500 incubated at room temperature for 1.5 hours.



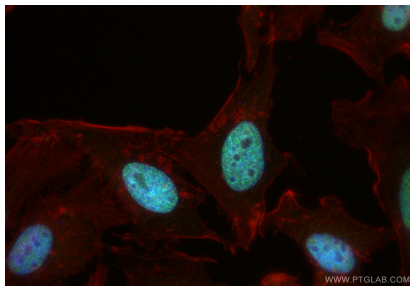
WB result of MSH6 antibody (18120-1-AP, 1:6000) with si-Control and si-MSH6 transfected HEK293 cells.



IP result of anti-MSH6 (IP:18120-1-AP, 4ug; Detection:18120-1-AP 1:600) with HEK-293 cells lysate 1120ug.



Immunohistochemical analysis of paraffin-embedded human normal colon slide using 18120-1-AP (MSH6 antibody) at dilution of 1:1600 (under 20x lens). Heat mediated antigen retrieval with Tris-EDTA buffer (pH 9.0).



Immunofluorescent analysis of (4% PFA) fixed HeLa cells using MSH6 antibody (18120-1-AP) at dilution of 1:200 and CoraLite®488-Conjugated Goat Anti-Rabbit IgG(H+L) (SA00013-2), CL594-phalloidin (red).