

For Research Use Only

# KLHL20 Polyclonal antibody, PBS Only

Catalog Number: 18111-1-PBS



## Basic Information

Catalog Number:

18111-1-PBS

Source:

Rabbit

Isotype:

IgG

Immunogen Catalog Number:

AG12567

GenBank Accession Number:

BC063418

GeneID (NCBI):

27252

UNIPROT ID:

Q9Y2M5

Full Name:

kelch-like 20 (Drosophila)

Calculated MW:

609 aa, 68 kDa

Observed MW:

65-67 kDa

Purification Method:

Antigen affinity purification

## Applications

Tested Applications:

WB, IHC, Indirect ELISA

Species Specificity:

human, mouse, rat

## Background Information

### Storage

Storage:

Store at -80°C.

The product is shipped with ice packs. Upon receipt, store it immediately at -80°C

Storage Buffer:

PBS only, pH7.3

For technical support and original validation data for this product please contact:

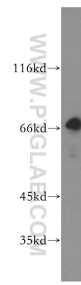
T: 4006900926

E: Proteintech-CN@ptglab.com

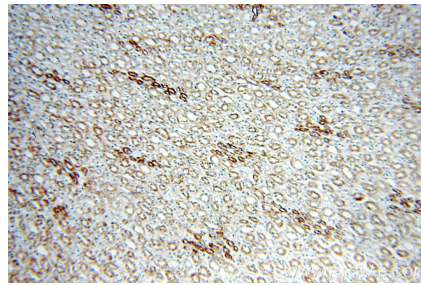
W: ptgcn.com

This product is exclusively available under Proteintech Group brand and is not available to purchase from any other manufacturer.

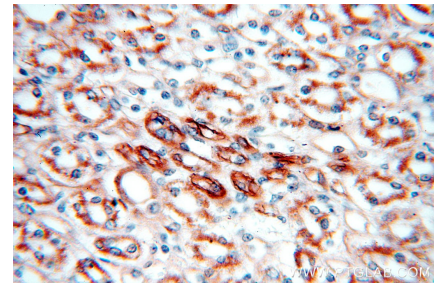
## Selected Validation Data



HEK-293 cells were subjected to SDS PAGE followed by western blot with 18111-1-AP (KLHL20 antibody) at dilution of 1:500 incubated at room temperature for 1.5 hours. This data was developed using the same antibody clone with 18111-1-PBS in a different storage buffer formulation.



Immunohistochemical analysis of paraffin-embedded human kidney using 18111-1-AP (KLHL20 antibody) at dilution of 1:50 (under 10x lens). This data was developed using the same antibody clone with 18111-1-PBS in a different storage buffer formulation.



Immunohistochemical analysis of paraffin-embedded human kidney using 18111-1-AP (KLHL20 antibody) at dilution of 1:50 (under 40x lens). This data was developed using the same antibody clone with 18111-1-PBS in a different storage buffer formulation.