

KLHL20 Polyclonal antibody

Catalog Number: 18111-1-AP

Basic Information

Catalog Number:

18111-1-AP

Size:

350 µg/ml

Source:

Rabbit

Isotype:

IgG

Immunogen Catalog Number:

AG12567

GenBank Accession Number:

BC063418

GeneID (NCBI):

27252

UNIPROT ID:

Q9Y2M5

Full Name:

kelch-like 20 (Drosophila)

Calculated MW:

609 aa, 68 kDa

Observed MW:

65-67 kDa

Purification Method:

Antigen affinity purification

Recommended Dilutions:

WB 1:500-1:1000

IHC 1:20-1:200

Applications

Tested Applications:

IHC, WB, ELISA

Species Specificity:

human, mouse, rat

Note-IHC: suggested antigen retrieval with **TE buffer pH 9.0; (*) Alternatively, antigen retrieval may be performed with citrate buffer pH 6.0**

Positive Controls:

WB : HEK-293 cells, mouse liver tissue

IHC : human kidney tissue,

Background Information

Storage

Storage:

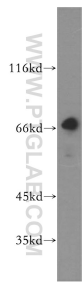
Store at -20°C. Stable for one year after shipment.

Storage Buffer:

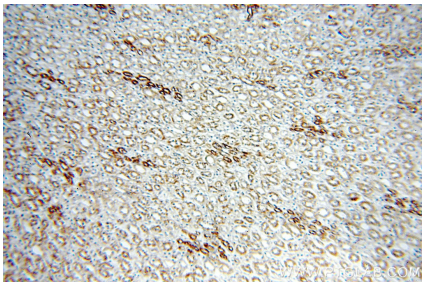
PBS with 0.02% sodium azide and 50% glycerol pH 7.3.

Aliquoting is unnecessary for -20°C storage

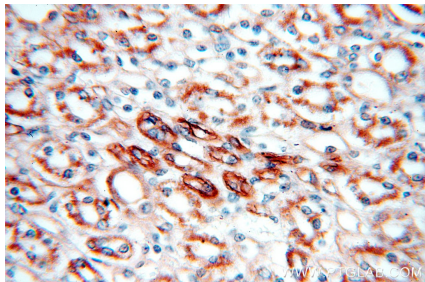
Selected Validation Data



HEK-293 cells were subjected to SDS PAGE followed by western blot with 18111-1-AP (KLHL20 antibody) at dilution of 1:500 incubated at room temperature for 1.5 hours.



Immunohistochemical analysis of paraffin-embedded human kidney using 18111-1-AP (KLHL20 antibody) at dilution of 1:50 (under 10x lens).



Immunohistochemical analysis of paraffin-embedded human kidney using 18111-1-AP (KLHL20 antibody) at dilution of 1:50 (under 40x lens).