

For Research Use Only

# PRPH2 Polyclonal antibody

Catalog Number: 18109-1-AP

20 Publications



## Basic Information

Catalog Number:

18109-1-AP

Concentration:

700 ug/ml

Source:

Rabbit

Isotype:

IgG

Immunogen Catalog Number:

AG12555

GenBank Accession Number:

BC074720

GeneID (NCBI):

5961

UNIPROT ID:

P23942

Full Name:

peripherin 2 (retinal degeneration, slow)

Calculated MW:

346 aa, 39 kDa

Observed MW:

39 kDa

Purification Method:

Antigen affinity purification

Recommended Dilutions:

WB 1:1000-1:4000

IF-P 1:200-1:800

## Applications

Tested Applications:

WB, IF-P, ELISA

Cited Applications:

WB, IHC, IF, IP

Species Specificity:

human, mouse, rat

Cited Species:

human, mouse, rat, zebrafish

Positive Controls:

WB : mouse eye tissue,

IF-P : mouse eye tissue,

## Background Information

Peripherin-2 (PRPH2), also known as retinal degeneration slow protein (RDS), is a photoreceptor-specific tetraspanin protein implicated in outer segment disk morphogenesis. It may function as an adhesion molecule involved in stabilization and compaction of outer segment disks or in the maintenance of the curvature of the rim. Mutations in peripherin-2 are responsible for various retinal degenerative diseases including autosomal dominant retinitis pigmentosa (ADRP).

## Notable Publications

Author	Pubmed ID	Journal	Application
Poppy Datta	31694913	J Biol Chem	WB, IF
Poppy Datta	33961633	PLoS One	WB, IHC
Nikolaos Mitrousis	32791386	Biomaterials	

## Storage

Storage:

Store at -20°C. Stable for one year after shipment.

Storage Buffer:

PBS with 0.02% sodium azide and 50% glycerol, pH7.3

Aliquoting is unnecessary for -20°C storage

For technical support and original validation data for this product please contact:

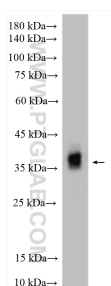
T: 4006900926

E: [Proteintech-CN@ptglab.com](mailto:Proteintech-CN@ptglab.com)

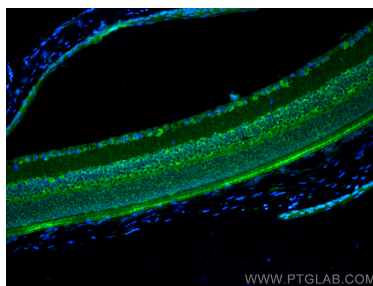
W: [ptgcn.com](http://ptgcn.com)

This product is exclusively available under Proteintech Group brand and is not available to purchase from any other manufacturer.

## Selected Validation Data



mouse eye tissue were subjected to SDS PAGE followed by western blot with 18109-1-AP (PRPH2 antibody) at dilution of 1:2000 incubated at room temperature for 1.5 hours.



Immunofluorescent analysis of (4% PFA) fixed paraffin-embedded mouse eye tissue using PRPH2 antibody (18109-1-AP) at dilution of 1:400 and Multi-rAb CoraLite® Plus 488-Goat Anti-Rabbit Recombinant Secondary Antibody (H+L) (RGAR002). Heat mediated antigen retrieval with Tris-EDTA buffer (pH 9.0).