

For Research Use Only

# SGCG Polyclonal antibody

Catalog Number: 18102-1-AP

6 Publications



## Basic Information

### Catalog Number:

18102-1-AP

### Size:

550 µg/ml

### Source:

Rabbit

### Isotype:

IgG

### Immunogen Catalog Number:

AG12402

### GenBank Accession Number:

BC074777

### GeneID (NCBI):

6445

### UNIPROT ID:

Q13326

### Full Name:

sarcoglycan, gamma (35kDa  
dystrophin-associated glycoprotein)

### Calculated MW:

291 aa, 32 kDa

### Observed MW:

35-38 kDa

### Purification Method:

Antigen affinity purification

### Recommended Dilutions:

WB 1:1000-1:8000

IP 0.5-4.0 µg for 1.0-3.0 mg of total  
protein lysate

IHC 1:20-1:200

## Applications

### Tested Applications:

WB, IP, IHC, ELISA

### Cited Applications:

WB, IHC, IF, IP

### Species Specificity:

human, mouse, rat

### Cited Species:

human, mouse

**Note-IHC: suggested antigen retrieval with  
TE buffer pH 9.0; (\*) Alternatively, antigen  
retrieval may be performed with citrate  
buffer pH 6.0**

### Positive Controls:

**WB** : mouse heart tissue, human skeletal muscle  
tissue, human heart tissue, mouse skeletal muscle  
tissue, rat heart tissue

**IP** : mouse heart tissue,

**IHC** : human heart tissue, human kidney tissue, human  
lung tissue, human ovary tissue, human placenta  
tissue, human skin tissue

## Background Information

## Notable Publications

Author	Pubmed ID	Journal	Application
Narinder Janghra	26974331	PLoS One	IF
Alison M Blain	29912990	PLoS One	IHC
Mojgan Reza	27477497	Hum Gene Ther Methods	IF

## Storage

### Storage:

Store at -20°C. Stable for one year after shipment.

### Storage Buffer:

PBS with 0.02% sodium azide and 50% glycerol pH 7.3.

Aliquoting is unnecessary for -20°C storage

For technical support and original validation data for this product please contact:

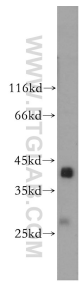
T: 4006900926

E: [Proteintech-CN@ptglab.com](mailto:Proteintech-CN@ptglab.com)

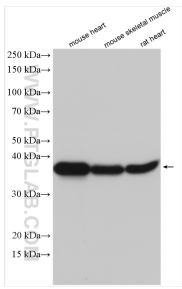
W: [ptgcn.com](http://ptgcn.com)

**This product is exclusively available under Proteintech  
Group brand and is not available to purchase from any  
other manufacturer.**

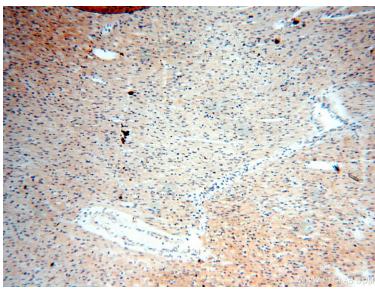
Selected Validation Data



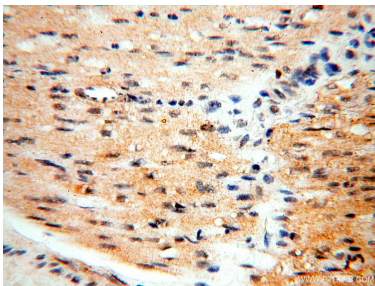
human skeletal muscle tissue were subjected to SDS PAGE followed by western blot with 18102-1-AP (SGCG antibody) at dilution of 1:600 incubated at room temperature for 1.5 hours.



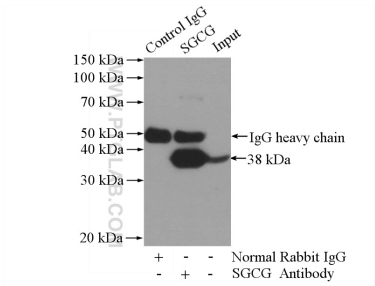
Various lysates were subjected to SDS PAGE followed by western blot with 18102-1-AP (SGCG antibody) at dilution of 1:4000 incubated at room temperature for 1.5 hours.



Immunohistochemical analysis of paraffin-embedded human heart using 18102-1-AP (SGCG antibody) at dilution of 1:50 (under 10x lens).



Immunohistochemical analysis of paraffin-embedded human heart using 18102-1-AP (SGCG antibody) at dilution of 1:50 (under 40x lens).



IP result of anti-SGCG (IP:18102-1-AP, 4ug; Detection:18102-1-AP 1:1000) with mouse heart tissue lysate 4000ug.