

For Research Use Only

PLA2G4E Polyclonal antibody

Catalog Number: 18088-1-AP

Featured Product

6 Publications



Basic Information

Catalog Number:

18088-1-AP

Concentration:

1000 ug/ml

Source:

Rabbit

Isotype:

IgG

Immunogen Catalog Number:

AG12808

GenBank Accession Number:

BC101584

GeneID (NCBI):

123745

UNIPROT ID:

Q3MJ16

Full Name:

phospholipase A2, group IVE

Calculated MW:

868 aa, 99 kDa

Observed MW:

99 kDa, 57 kDa

Purification Method:

Antigen affinity purification

Recommended Dilutions:

WB 1:800-1:3000

IHC 1:50-1:200

IF/ICC 1:200-1:800

Applications

Tested Applications:

WB, IHC, IF/ICC, ELISA

Cited Applications:

WB, IHC, IF

Species Specificity:

human, mouse, rat

Cited Species:

human, mouse

Positive Controls:

WB : K-562 cells, SH-SY5Y cells, SW 1990 cells, mouse thymus tissue, NIH/3T3 cells

IHC : human skeletal muscle tissue, human heart tissue

IF/ICC : HeLa cells,

Note-IHC: suggested antigen retrieval with *TE buffer pH 9.0*; (*) Alternatively, antigen retrieval may be performed with *citrate buffer pH 6.0*

Background Information

PLA2G4E (Phospholipase A2 group IVE), also known as cPLA2-epsilon. Calcium-dependent N-acyltransferase is involved in the biosynthesis of N-acyl ethanolamines (NAEs) in the brain (PMID:29447909). Transfers the sn-1 fatty acyl chain of phosphatidylcholine (fatty acyl donor) to the amine group of phosphatidylethanolamine (fatty acyl acceptor) to generate N-acyl phosphatidylethanolamine (NAPE). Similarly can use plasmenylethanolamine as a fatty acyl acceptor to form N-acyl plasmenylethanolamine (N-Acyl-PlsEt). Both NAPE and N-Acyl-PlsEt can serve as precursors of bioactive NAEs like N-arachidonoyl phosphatidylethanolamine also called anandamide (PMID:29447909; 30517655).

Notable Publications

Author	Pubmed ID	Journal	Application
Marta Pérez-González	32380223	Prog Neurobiol	WB,IHC,IF
Haojie Zhang	36609266	J Neuroinflammation	WB
Junsheng Lou	34872436	Autophagy	WB

Storage

Storage:

Store at -20°C. Stable for one year after shipment.

Storage Buffer:

PBS with 0.02% sodium azide and 50% glycerol pH 7.3.

Aliquoting is unnecessary for -20°C storage

For technical support and original validation data for this product please contact:

T: 4006900926

E: Proteintech-CN@ptglab.com

W: ptgcn.com

This product is exclusively available under Proteintech Group brand and is not available to purchase from any other manufacturer.

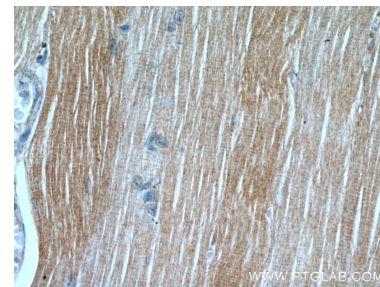
Selected Validation Data



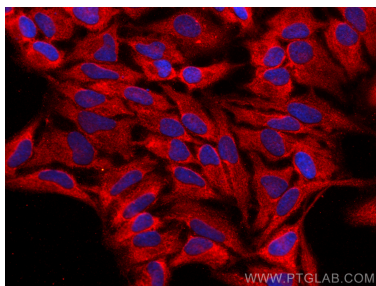
Various lysates were subjected to SDS PAGE followed by western blot with 18088-1-AP (PLA2G4E antibody) at dilution of 1:2000 incubated at room temperature for 1.5 hours.



Immunohistochemical analysis of paraffin-embedded human skeletal muscle using 18088-1-AP (PLA2G4E antibody) at dilution of 1:50 (under 10x lens).



Immunohistochemical analysis of paraffin-embedded human skeletal muscle using 18088-1-AP (PLA2G4E antibody) at dilution of 1:50 (under 40x lens).



Immunofluorescent analysis of (-20°C Ethanol) fixed HeLa cells using PLA2G4E antibody (18088-1-AP) at dilution of 1:400 and CoraLite®594-Conjugated Goat Anti-Rabbit IgG(H+L) (SA00013-4).