

For Research Use Only

# G6PC2 Polyclonal antibody, PBS Only

Catalog Number: 18074-1-PBS



## Basic Information

Catalog Number:

18074-1-PBS

Source:

Rabbit

Isotype:

IgG

Immunogen Catalog Number:

AG12764

GenBank Accession Number:

BC104778

GeneID (NCBI):

57818

UNIPROT ID:

Q9NQR9

Full Name:

glucose-6-phosphatase, catalytic, 2

Calculated MW:

355 aa, 41 kDa

Observed MW:

38-40 kDa

Purification Method:

Antigen affinity purification

## Applications

Tested Applications:

IHC, IF-P, IP, Indirect ELISA

Species Specificity:

human, mouse

## Background Information

G6PC2, also known as IGRP, is a member of the glucose-6-phosphatase catalytic subunit (G6PC) gene family. G6PC2 catalyzes the hydrolysis of glucose-6-phosphate to glucose and inorganic phosphate within the lumen of the endoplasmic reticulum. G6PC2 is mainly expressed in pancreatic islet  $\beta$ -cells. G6PC2 acts to oppose the action of the beta cell glucose sensor, glucokinase, by creating a futile substrate cycle. (PMID: 37855366, PMID: 32569842, PMID: 37552875)

## Storage

Storage:

Store at  $-80^{\circ}\text{C}$ .

**The product is shipped with ice packs. Upon receipt, store it immediately at  $-80^{\circ}\text{C}$**

Storage Buffer:

PBS only, pH7.3

For technical support and original validation data for this product please contact:

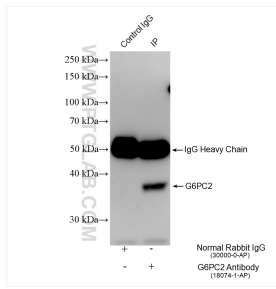
T: 4006900926

E: [Proteintech-CN@ptglab.com](mailto:Proteintech-CN@ptglab.com)

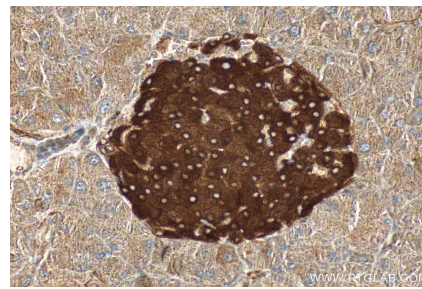
W: [ptgcn.com](http://ptgcn.com)

**This product is exclusively available under Proteintech Group brand and is not available to purchase from any other manufacturer.**

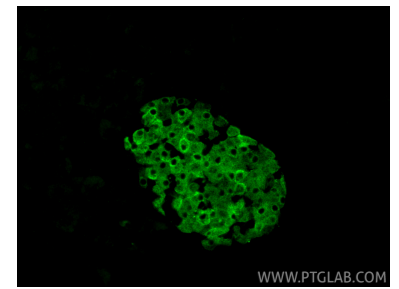
## Selected Validation Data



IP result of anti-G6PC2 (IP:18074-1-AP, 4ug; Detection:18074-1-AP 1:500) with mouse pancreas tissue lysate 2480 ug. This data was developed using the same antibody clone with 18074-1-PBS in a different storage buffer formulation.



Immunohistochemical analysis of paraffin-embedded mouse pancreas tissue slide using 18074-1-AP (G6PC2 antibody) at dilution of 1:200 (under 40x lens). Heat mediated antigen retrieval with Tris-EDTA buffer (pH 9.0). This data was developed using the same antibody clone with 18074-1-PBS in a different storage buffer formulation.



Immunofluorescent analysis of (4% PFA) fixed paraffin-embedded mouse pancreas tissue using G6PC2 antibody (18074-1-AP) at dilution of 1:200 and CoraLite®488-Conjugated Goat Anti-Rabbit IgG(H+L) (SA00013-2). Heat mediated antigen retrieval with Tris-EDTA buffer (pH 9.0). This data was developed using the same antibody clone with 18074-1-PBS in a different storage buffer formulation.