

For Research Use Only

# IGSF3 Polyclonal antibody, PBS Only

Catalog Number: 18072-1-PBS



## Basic Information

Catalog Number:

18072-1-PBS

Source:

Rabbit

Isotype:

IgG

Immunogen Catalog Number:

AG12711

GenBank Accession Number:

BC110651

GeneID (NCBI):

3321

UNIPROT ID:

O75054

Full Name:

immunoglobulin superfamily,  
member 3

Calculated MW:

1195 aa, 135 kDa

Observed MW:

135-140 kDa

Purification Method:

Antigen affinity purification

## Applications

Tested Applications:

WB, Indirect ELISA

Species Specificity:

human

## Background Information

IGSF3, known as EWI3, is a member of the immunoglobulin superfamily (IgSF) involved in various cell-cell interactions. IGSF3 is part of a cell adhesion molecule that is involved in cell-to-cell recognition, binding, and signal transduction. IGSF3 plays an important role in neural development, especially in the migration of neural crest cells and the development of the enteric nervous system. (PMID: 9541533; PMID: 37821496).

## Storage

Storage:

Store at -80°C.

**The product is shipped with ice packs. Upon receipt, store it immediately at -80°C**

Storage Buffer:

PBS only, pH7.3

For technical support and original validation data for this product please contact:

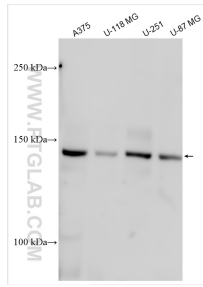
T: 4006900926

E: [Proteintech-CN@ptglab.com](mailto:Proteintech-CN@ptglab.com)

W: [ptgcn.com](http://ptgcn.com)

**This product is exclusively available under Proteintech Group brand and is not available to purchase from any other manufacturer.**

## Selected Validation Data



Various lysates were subjected to SDS PAGE followed by western blot with 18072-1-AP (IGSF3 antibody) at dilution of 1:500 incubated at room temperature for 1.5 hours. This data was developed using the same antibody clone with 18072-1-PBS in a different storage buffer formulation.