

For Research Use Only

ALDOB Polyclonal antibody

Catalog Number: 18065-1-AP

Featured Product

35 Publications



Basic Information

Catalog Number:

18065-1-AP

Concentration:

550 ug/ml

Source:

Rabbit

Isotype:

IgG

Immunogen Catalog Number:

AG12695

GenBank Accession Number:

BC029399

GeneID (NCBI):

229

UNIPROT ID:

P05062

Full Name:

aldolase B, fructose-bisphosphate

Calculated MW:

316 aa, 35 kDa

Observed MW:

35-40 kDa

Purification Method:

Antigen affinity purification

Recommended Dilutions:

WB 1:2000-1:16000

IP 0.5-4.0 ug for 1.0-3.0 mg of total protein lysate

IHC 1:50-1:500

Applications

Tested Applications:

WB, IHC, IP, ELISA

Cited Applications:

WB, IHC, IF, IP

Species Specificity:

human, mouse, rat

Cited Species:

human, mouse, rat

Note-IHC: suggested antigen retrieval with TE buffer pH 9.0; (*) Alternatively, antigen retrieval may be performed with citrate buffer pH 6.0

Positive Controls:

WB : mouse kidney tissue, mouse liver tissue, mouse brain tissue, Raji cells, mouse skeletal muscle tissue, rat kidney tissue

IP : mouse brain tissue, mouse kidney tissue

IHC : human liver cancer tissue, human liver tissue

Background Information

Fructose-1,6-bisphosphate aldolase is a glycolytic enzyme that catalyzes the reversible conversion of fructose-1,6-bisphosphate to glyceraldehyde 3-phosphate and dihydroxyacetone phosphate. Vertebrates have 3 aldolase isozymes, aldolase A (ALDOA), B (ALDOB), and C (ALDOC). Deficiency of this enzyme ALDOB causes an accumulation of fructose-1-phosphate after fructose intake, which results in toxic symptoms like vomiting, hypoglycemia, jaundice, elevated liver enzymes and hepatomegaly (PMID:22375183). This antibody may detect ALDOA.

Notable Publications

Author	Pubmed ID	Journal	Application
Chang Zhao	31548586	Sci Rep	WB
Felicia Gerst	30202879	J Clin Endocrinol Metab	
Hao-Long Zeng	29254222	Oncotarget	WB

Storage

Storage:

Store at -20°C. Stable for one year after shipment.

Storage Buffer:

PBS with 0.02% sodium azide and 50% glycerol pH 7.3.

Aliquoting is unnecessary for -20°C storage

For technical support and original validation data for this product please contact:

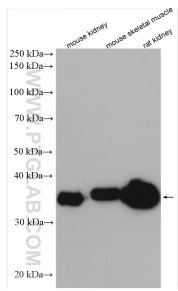
T: 4006900926

E: Proteintech-CN@ptglab.com

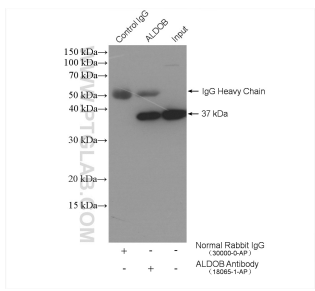
W: ptgcn.com

This product is exclusively available under Proteintech Group brand and is not available to purchase from any other manufacturer.

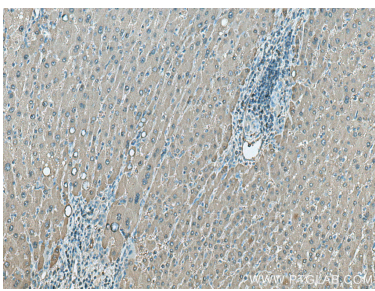
Selected Validation Data



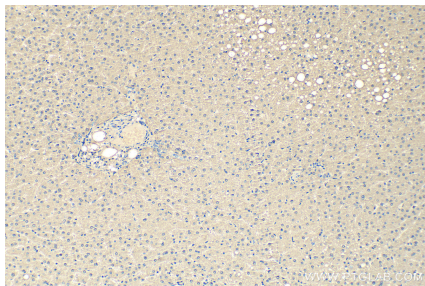
Various lysates were subjected to SDS PAGE followed by western blot with 18065-1-AP (ALDOB antibody) at dilution of 1:8000 incubated at room temperature for 1.5 hours.



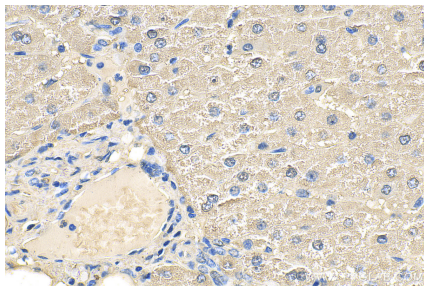
IP result of anti-ALDOB (IP:18065-1-AP, 4ug; Detection:18065-1-AP 1:500) with mouse brain tissue lysate 2400 ug.



Immunohistochemical analysis of paraffin-embedded human liver cancer tissue slide using 18065-1-AP (ALDOB antibody) at dilution of 1:200 (under 10x lens). Heat mediated antigen retrieval with Tris-EDTA buffer (pH 9.0).



Immunohistochemical analysis of paraffin-embedded human liver tissue slide using 18065-1-AP (ALDOB antibody) at dilution of 1:400 (under 10x lens). Heat mediated antigen retrieval with Tris-EDTA buffer (pH 9.0).



Immunohistochemical analysis of paraffin-embedded human liver cancer tissue slide using 18065-1-AP (ALDOB antibody) at dilution of 1:400 (under 40x lens). Heat mediated antigen retrieval with Tris-EDTA buffer (pH 9.0).