

For Research Use Only

SERPINB13 Polyclonal antibody

Catalog Number: 18045-1-AP



Basic Information

Catalog Number:

18045-1-AP

Size:

800 µg/ml

Source:

Rabbit

Isotype:

IgG

Immunogen Catalog Number:

AG12686

GenBank Accession Number:

BC101821

GeneID (NCBI):

5275

UNIPROT ID:

Q9UIV8

Full Name:

serpin peptidase inhibitor, clade B (ovalbumin), member 13

Calculated MW:

391 aa, 44 kDa

Purification Method:

Antigen affinity purification

Recommended Dilutions:

IHC 1:50-1:500

IF/ICC 1:10-1:100

Applications

Tested Applications:

IHC, IF/ICC, FC (Intra), ELISA

Species Specificity:

human, mouse, rat

Note-IHC: suggested antigen retrieval with TE buffer pH 9.0; (*) Alternatively, antigen retrieval may be performed with citrate buffer pH 6.0

Positive Controls:

IHC : human oesophagus cancer tissue, mouse skin tissue, human skin tissue

IF/ICC : HepG2 cells, Hela cells

Background Information

Storage

Storage:

Store at -20°C. Stable for one year after shipment.

Storage Buffer:

PBS with 0.02% sodium azide and 50% glycerol pH 7.3.

Aliquoting is unnecessary for -20°C storage

For technical support and original validation data for this product please contact:

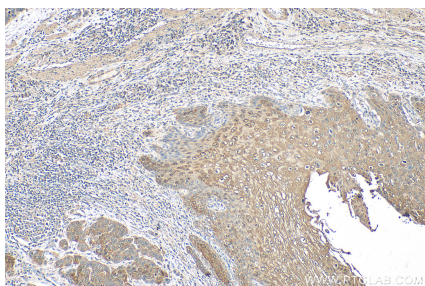
T: 4006900926

E: Proteintech-CN@ptglab.com

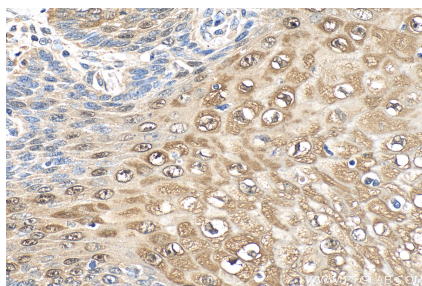
W: ptgcn.com

This product is exclusively available under Proteintech Group brand and is not available to purchase from any other manufacturer.

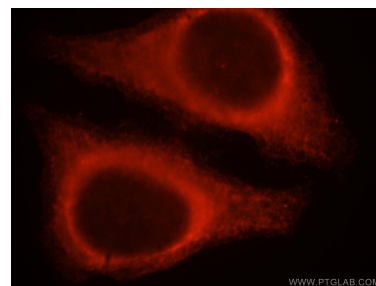
Selected Validation Data



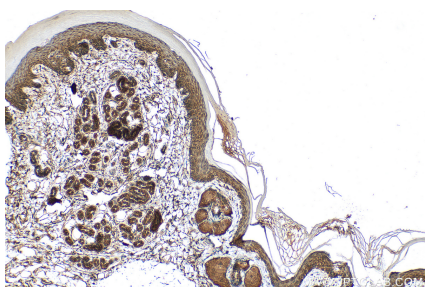
Immunohistochemical analysis of paraffin-embedded human oesophagus cancer tissue slide using 18045-1-AP (SERPINB13 antibody) at dilution of 1:200 (under 10x lens). Heat mediated antigen retrieval with Tris-EDTA buffer (pH 9.0).



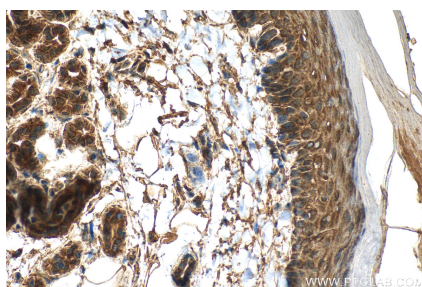
Immunohistochemical analysis of paraffin-embedded human oesophagus cancer tissue slide using 18045-1-AP (SERPINB13 antibody) at dilution of 1:200 (under 40x lens). Heat mediated antigen retrieval with Tris-EDTA buffer (pH 9.0).



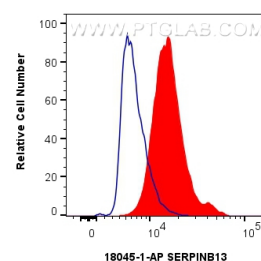
Immunofluorescent analysis of HepG2 cells, using SERPINB13 antibody 18045-1-AP at 1:25 dilution and Rhodamine-labeled goat anti-rabbit IgG (red).



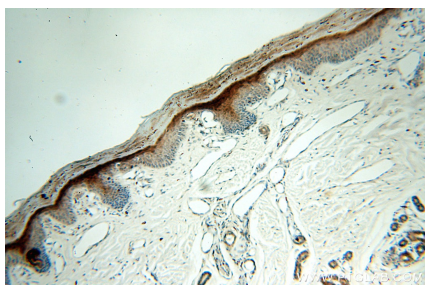
Immunohistochemical analysis of paraffin-embedded mouse skin tissue slide using 18045-1-AP (SERPINB13 antibody) at dilution of 1:200 (under 10x lens). Heat mediated antigen retrieval with Tris-EDTA buffer (pH 9.0).



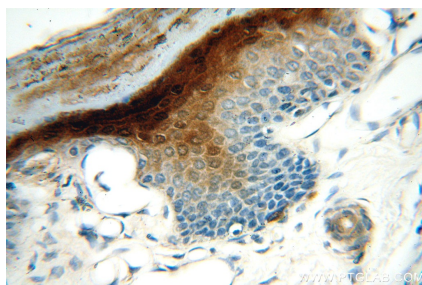
Immunohistochemical analysis of paraffin-embedded mouse skin tissue slide using 18045-1-AP (SERPINB13 antibody) at dilution of 1:200 (under 40x lens). Heat mediated antigen retrieval with Tris-EDTA buffer (pH 9.0).



1x10⁶ HepG2 cells were intracellularly stained with 0.4 ug SERPINB13 Polyclonal antibody (18045-1-AP) and CoraLite®488-Conjugated AffiniPure Goat Anti-Rabbit IgG(H+L) (SA00013-2)(red), or 0.4 ug Rabbit IgG control Rabbit PolyAb (30000-0-AP) (blue). Cells were fixed with 4% PFA and permeabilized with Flow Cytometry Perm Buffer (PF00011-C).



Immunohistochemical analysis of paraffin-embedded human skin using 18045-1-AP (SERPINB13 antibody) at dilution of 1:100 (under 10x lens).



Immunohistochemical analysis of paraffin-embedded human skin using 18045-1-AP (SERPINB13 antibody) at dilution of 1:100 (under 40x lens).